

## Product datasheet for **TA384628**

### Cytokeratin 18 (KRT18) Rabbit Monoclonal Antibody [Clone ID: R03-5E3]

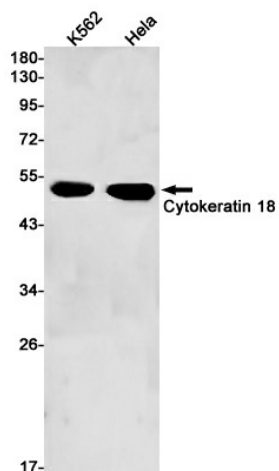
#### Product data:

Product Type:	Primary Antibodies
Clone Name:	R03-5E3
Applications:	IF, IHC, WB
Recommended Dilution:	WB: 1/2000 IHC: 1/50 ICC/IF: 1/50
Reactivity:	Human
Host:	Rabbit
Isotype:	IgG
Clonality:	Monoclonal
Immunogen:	A synthetic peptide of human Cytokeratin 18
Formulation:	50mM Tris-Glycine(pH 7.4), 0.15M NaCl, 40% Glycerol, 0.01% Sodium azide and 0.05% BSA
Concentration:	lot specific
Purification:	Affinity Purified
Conjugation:	Unconjugated
Storage:	Store at 4°C short term. Aliquot and store at -20°C long term. Avoid freeze/thaw cycles.
Stability:	1 year
Predicted Protein Size:	Calculated MW: 48 kDa; Observed MW: 48 kDa
Gene Name:	keratin 18
Database Link:	<a href="#">Entrez Gene 3875 Human P05783</a>
Background:	Swiss-Prot Acc.P05783.Involved in the uptake of thrombin-antithrombin complexes by hepatic cells . When phosphorylated, plays a role in filament reorganization. Involved in the delivery of mutated CFTR to the plasma membrane. Together with KRT8, is involved in interleukin-6 (IL-6)-mediated barrier protection.
Synonyms:	CK-18; CYK18; Cytokeratin-18; K18; Keratin-18

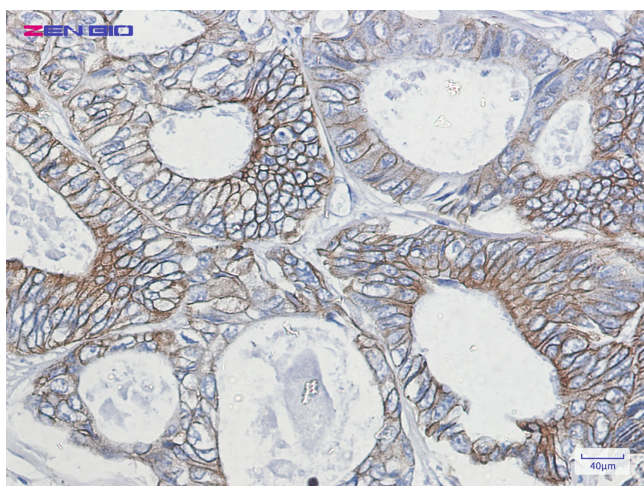


[View online »](#)

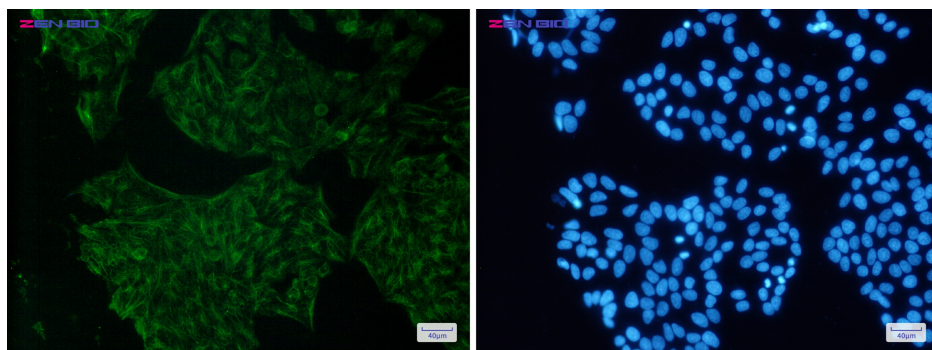
Product images:



Western blot detection of Cytokeratin 18 in K562, HeLa cell lysates using Cytokeratin 18 Rabbit mAb (1:1000 diluted). Predicted band size: 48kDa. Observed band size: 48kDa.



Immunohistochemistry of Cytokeratin 18 in paraffin-embedded Human colon cancer tissue using Cytokeratin 18 Rabbit mAb at dilution 1/50



Immunocytochemistry of Cytokeratin 18 (green) in HeLa cells using Cytokeratin 18 Rabbit mAb at dilution 1/5, and DAPI (blue)