

## Product datasheet for **TA384627**

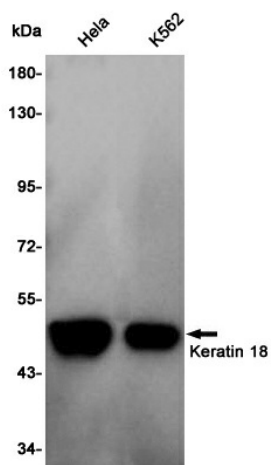
### Krt18 Rabbit Polyclonal Antibody

#### Product data:

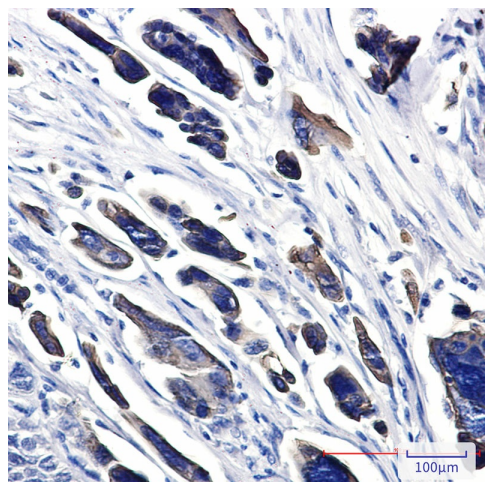
Product Type:	Primary Antibodies
Applications:	FC, IF, IHC, WB
Recommended Dilution:	WB: 1/1000 IHC: 1/20-1/500 ICC/IF: 1/20 FC: 1/20
Reactivity:	Human
Host:	Rabbit
Isotype:	IgG
Clonality:	Polyclonal
Immunogen:	Recombinant protein of human Cytokeratin 18
Formulation:	50mM Tris-Glycine(pH 7.4), 0.15M NaCl, 40% Glycerol, 0.01% Sodium azide and 0.05% BSA
Concentration:	lot specific
Purification:	Affinity Purified
Conjugation:	Unconjugated
Storage:	Store at 4°C short term. Aliquot and store at -20°C long term. Avoid freeze/thaw cycles.
Stability:	1 year
Predicted Protein Size:	Calculated MW: 48 kDa; Observed MW: 48 kDa
Gene Name:	keratin 18
Database Link:	<a href="#">P05784</a>
Background:	Swiss-Prot Acc.P05784.
Synonyms:	CK-18; CYK18; Cytokeratin-18; K18; Keratin-18



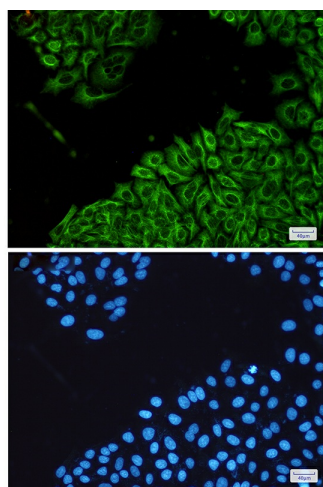
[View online »](#)

**Product images:**

Western blot analysis of Keratin 18 in HeLa, K562 lysates using Cytokeratin 18 antibody.



Immunohistochemistry analysis of paraffin-embedded Human Cholangiocarcinoma using Cytokeratin 18 antibody. High-pressure and temperature Sodium Citrate pH 6.0 was used for antigen retrieval.



Immunocytochemistry analysis of Cytokeratin 18(green) in HeLa using Cytokeratin 18 antibody, and DAPI(blue)