

Product datasheet for **TA384624**

Cytokeratin 15 (KRT15) Mouse Monoclonal Antibody [Clone ID: 2G8-10H10-8C9]

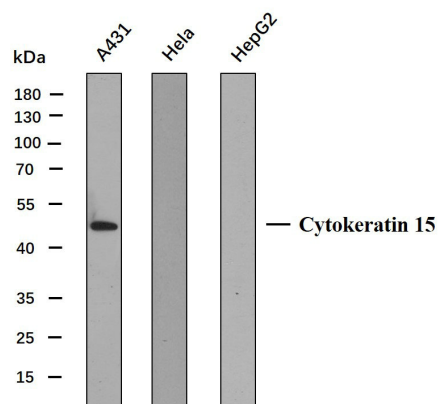
Product data:

Product Type:	Primary Antibodies
Clone Name:	2G8-10H10-8C9
Applications:	IHC, WB
Recommended Dilution:	IHC-p: 1/100-1/500 WB: 1/500-1/2000
Reactivity:	Human
Host:	Mouse
Isotype:	IgG1, kappa
Clonality:	Monoclonal
Immunogen:	Synthesized peptide derived from human Cytokeratin 15
Formulation:	Liquid in PBS containing 50% glycerol, 0.5% BSA and 0.02% sodium azide, pH 7.3.
Concentration:	lot specific
Purification:	Affinity Chromatography
Conjugation:	Unconjugated
Storage:	Store at 4°C short term. Aliquot and store at -20°C long term. Avoid freeze/thaw cycles.
Stability:	1 year
Predicted Protein Size:	Observed MW (kDa): 45
Gene Name:	keratin 15
Database Link:	Entrez Gene 3866 Human P19012
Background:	Swiss-Prot Acc.P19012.
Synonyms:	CK-15; CK15; Cytokeratin-15; K1CO; K15; Keratin-15; KRTB; OTTHUMP00000165060



[View online »](#)

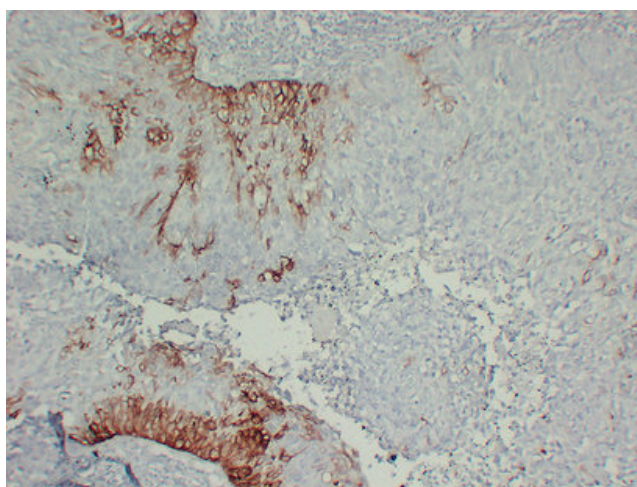
Product images:



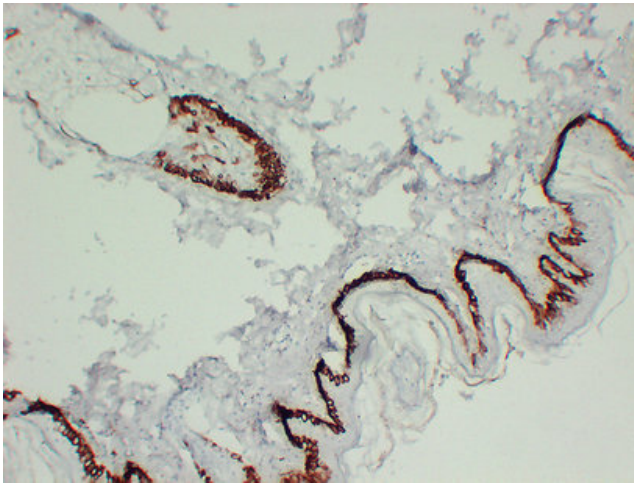
Various whole cell lysates(30ug) were separated by 10% SDS-PAGE, and the membrane was blotted with Cytokeratin 15 antibody. The HRP-conjugated anti-Mouse IgG antibody was used to detect the antibody.

Predicted band size: 49kDa

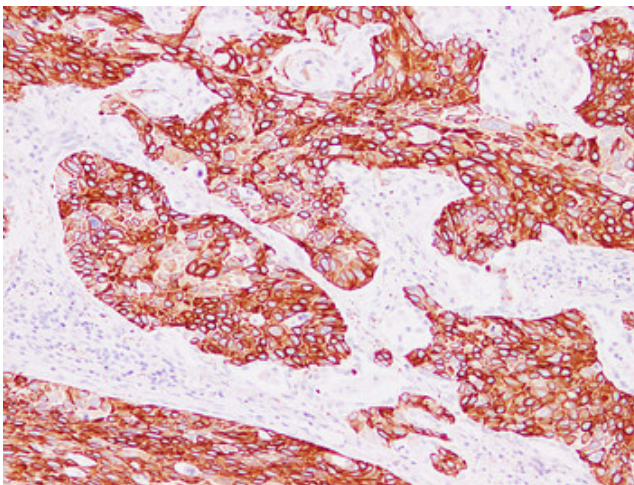
Western blot analysis of CK-15Antibody at 1:1000 dilution.



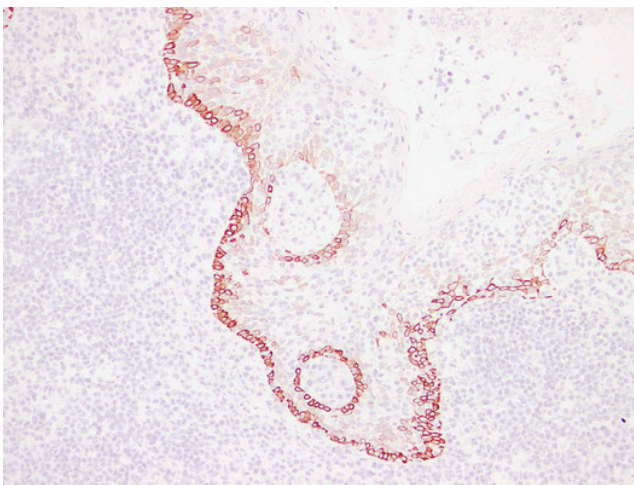
Immunohistochemical analysis of paraffin-embedded Cervical squamous carcinoma. 1, Antibody was diluted at 1:200(4°, overnight). 2, Tris-EDTA,pH8.0 was used for antigen retrieval. 3,Secondary antibody was diluted at 1:200(room temperature, 30min).



Immunohistochemical analysis of paraffin-embedded Skin. 1, Antibody was diluted at 1:200(4°, overnight). 2, Tris-EDTA, pH8.0 was used for antigen retrieval. 3, Secondary antibody was diluted at 1:200(room temperature, 30min).



Immunohistochemical analysis of paraffin-embedded Squamous cell lung carcinoma. 1, Antibody was diluted at 1:200(4°, overnight). 2, Tris-EDTA, pH8.0 was used for antigen retrieval. 3, Secondary antibody was diluted at 1:200(room temperature, 30min).



Immunohistochemical analysis of paraffin-embedded Tonsil. 1, Antibody was diluted at 1:200(4°, overnight). 2, Tris-EDTA, pH8.0 was used for antigen retrieval. 3, Secondary antibody was diluted at 1:200(room temperature, 30min).