

Product datasheet for **TA384623**

KRT13 Mouse Polyclonal Antibody

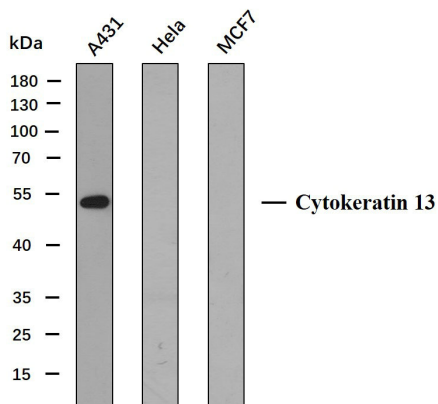
Product data:

| | |
|-------------------------|--|
| Product Type: | Primary Antibodies |
| Applications: | IHC, WB |
| Recommended Dilution: | IHC-p: 1/100-1/500 WB: 1/500-1/2000 |
| Reactivity: | Human |
| Host: | Mouse |
| Isotype: | IgG1, kappa |
| Clonality: | Polyclonal |
| Immunogen: | Synthesized peptide derived from human Cytokeratin 13 |
| Formulation: | Liquid in PBS containing 50% glycerol, 0.5% BSA and 0.02% sodium azide, pH 7.3. |
| Concentration: | lot specific |
| Purification: | Affinity Chromatography |
| Conjugation: | Unconjugated |
| Storage: | Store at 4°C short term. Aliquot and store at -20°C long term. Avoid freeze/thaw cycles. |
| Stability: | 1 year |
| Predicted Protein Size: | Observed MW (kDa): 50 |
| Gene Name: | keratin 13 |
| Database Link: | Entrez Gene 3860 Human P13646 |
| Background: | Swiss-Prot Acc.P13646. |
| Synonyms: | CK-13; CK13; Cytokeratin-13; K13; Keratin-13; MGC3781; MGC161462 |



[View online »](#)

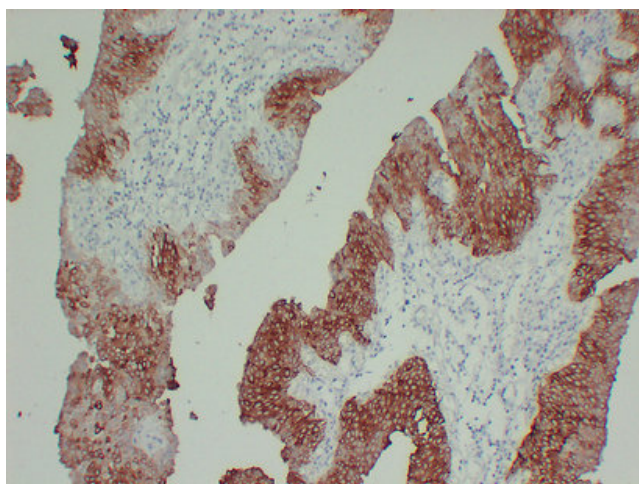
Product images:



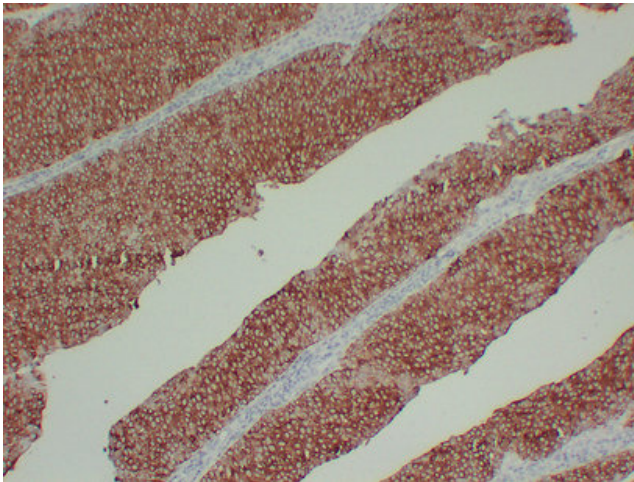
Various whole cell lysates(30ug) were separated by 10% SDS-PAGE, and the membrane was blotted with Cytokeratin 13 antibody. The HRP-conjugated anti-Mouse IgG antibody was used to detect the antibody.

Predicted band size: 50kDa

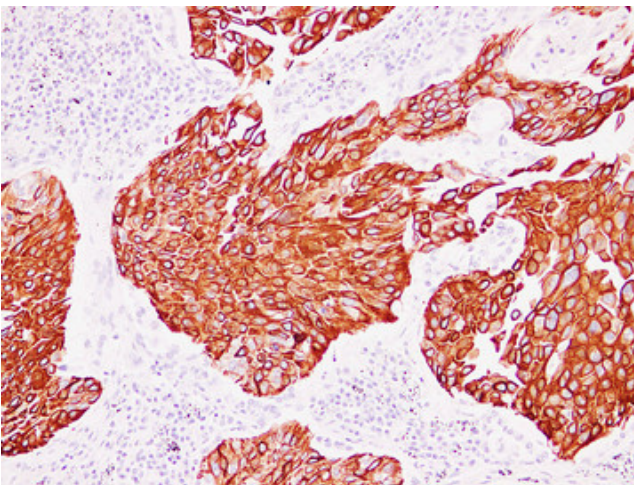
Western blot analysis of CK-13Antibody at 1:1000 dilution.



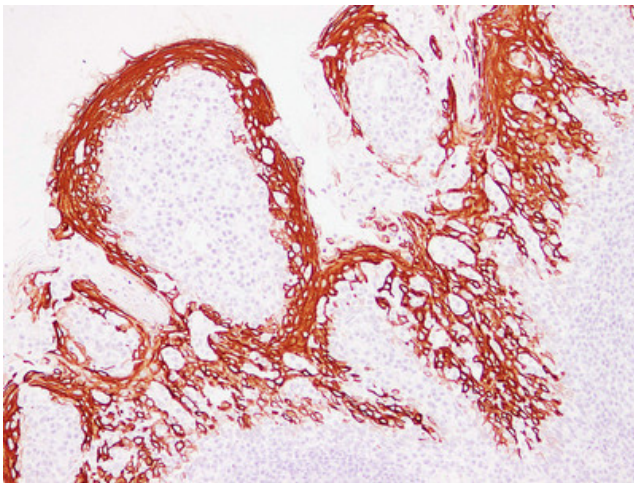
Immunohistochemical analysis of paraffin-embedded Transitional cell carcinoma. 1, Antibody was diluted at 1:200(4°,overnight). 2, Citric acid ,pH6.0 was used for antigen retrieval. 3,Secondary antibody was diluted at 1:200(room temperature, 30min).



Immunohistochemical analysis of paraffin-embedded Transitional cell carcinoma. 1, Antibody was diluted at 1:200(4°,overnight). 2, Citric acid ,pH6.0 was used for antigen retrieval. 3,Secondary antibody was diluted at 1:200(room temperature, 30min).



Immunohistochemical analysis of paraffin-embedded Squamous cell lung carcinoma. 1, Antibody was diluted at 1:200(4°,overnight). 2, Citric acid ,pH6. was used for antigen retrieval. 3,Secondary antibody was diluted at 1:200(room temperature, 30min).



Immunohistochemical analysis of paraffin-embedded Tonsil. 1, Antibody was diluted at 1:200(4°,overnight). 2, Citric acid ,pH6.0 was used for antigen retrieval. 3,Secondary antibody was diluted at 1:200(room temperature, 30min).