

Product datasheet for **TA384622**

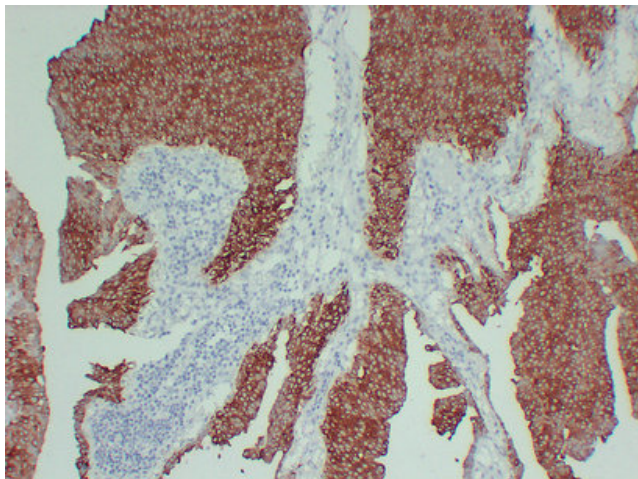
KRT13 Mouse Monoclonal Antibody [Clone ID: 9E5-7A9-6B3]

Product data:

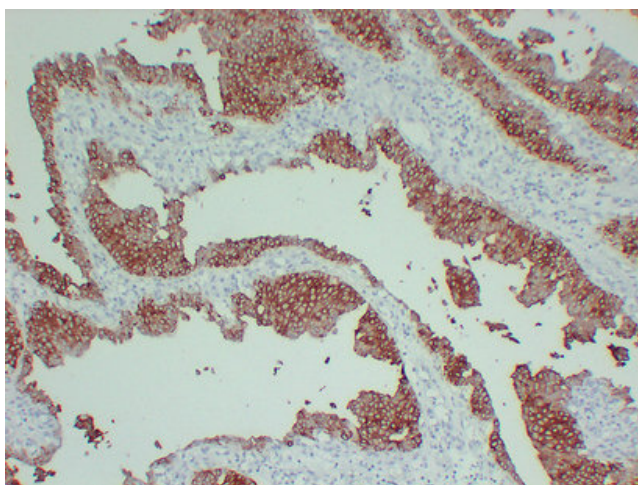
Product Type:	Primary Antibodies
Clone Name:	9E5-7A9-6B3
Applications:	IHC, WB
Recommended Dilution:	IHC-p: 1/100-1/500 WB: 1/500-1/2000
Reactivity:	Human
Host:	Mouse
Isotype:	IgG1, kappa
Clonality:	Monoclonal
Immunogen:	Synthesized peptide derived from human Cytokeratin 13
Formulation:	Liquid in PBS containing 50% glycerol, 0.5% BSA and 0.02% sodium azide, pH 7.3.
Concentration:	lot specific
Purification:	Affinity Chromatography
Conjugation:	Unconjugated
Storage:	Store at 4°C short term. Aliquot and store at -20°C long term. Avoid freeze/thaw cycles.
Stability:	1 year
Predicted Protein Size:	Observed MW (kDa): 50
Gene Name:	keratin 13
Database Link:	Entrez Gene 3860 Human P13646
Background:	Swiss-Prot Acc.P13646.
Synonyms:	CK-13; CK13; Cytokeratin-13; K13; Keratin-13; MGC3781; MGC161462



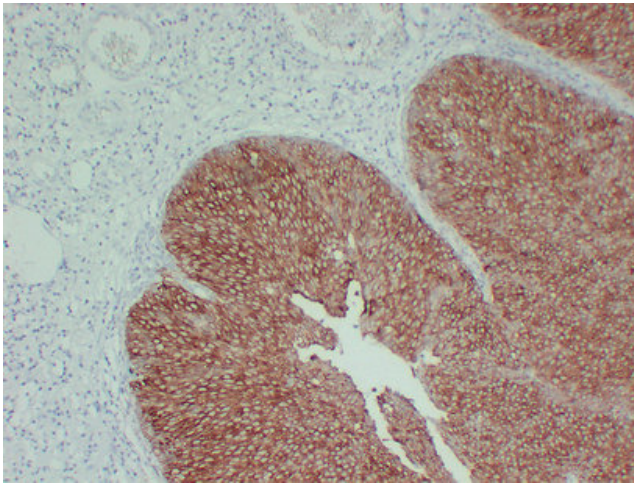
[View online »](#)

Product images:

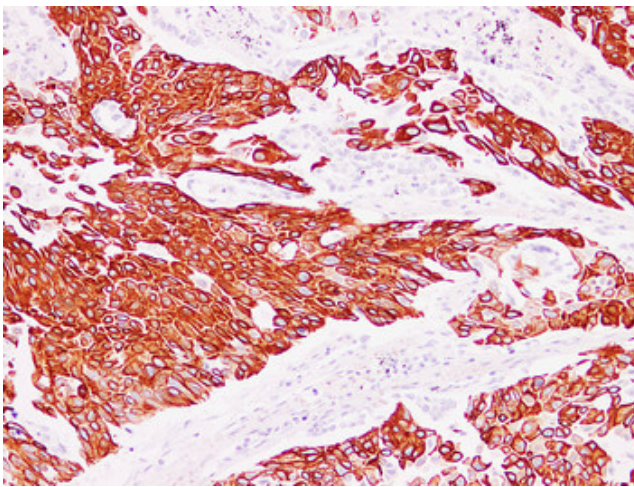
Immunohistochemical analysis of paraffin-embedded Transitional cell carcinoma. 1, Antibody was diluted at 1:200(4°, overnight). 2, Citrate buffer of pH6.0 was used for antigen retrieval. 3, Secondary antibody was diluted at 1:200(room temperature, 30min).



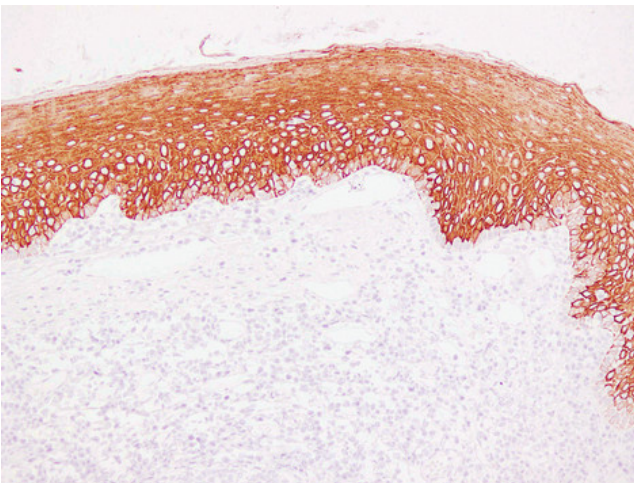
Immunohistochemical analysis of paraffin-embedded Transitional cell carcinoma. 1, Antibody was diluted at 1:200(4°, overnight). 2, Citrate buffer of pH6.0 was used for antigen retrieval. 3, Secondary antibody was diluted at 1:200(room temperature, 30min).



Immunohistochemical analysis of paraffin-embedded Transitional cell carcinoma. 1, Antibody was diluted at 1:200(4°,overnight). 2, Citrate buffer of pH6. was used for antigen retrieval. 3,Secondary antibody was diluted at 1:200(room temperature, 30min).



Immunohistochemical analysis of paraffin-embedded Squamous cell lung carcinoma. 1, Antibody was diluted at 1:200(4°,overnight). 2, Citrate buffer of pH6.0 was used for antigen retrieval. 3,Secondary antibody was diluted at 1:200(room temperature, 30min).



Immunohistochemical analysis of paraffin-embedded Tonsil. 1, Antibody was diluted at 1:200(4°,overnight). 2, Citrate buffer of pH6.0 was used for antigen retrieval. 3,Secondary antibody was diluted at 1:200(room temperature, 30min).