

## Product datasheet for **TA384621**

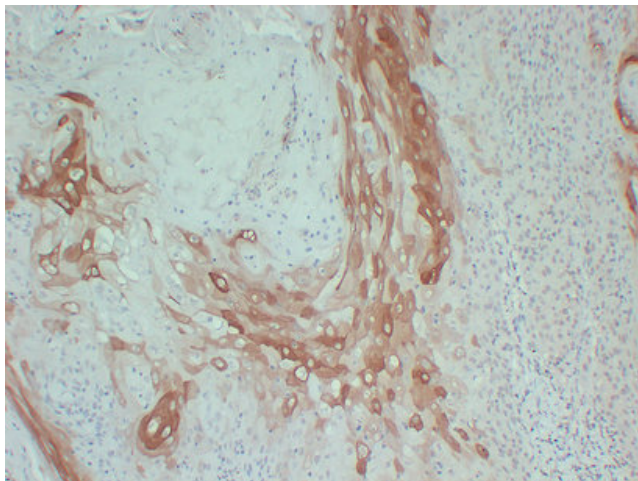
### Cytokeratin 10 (KRT10) Mouse Polyclonal Antibody

#### Product data:

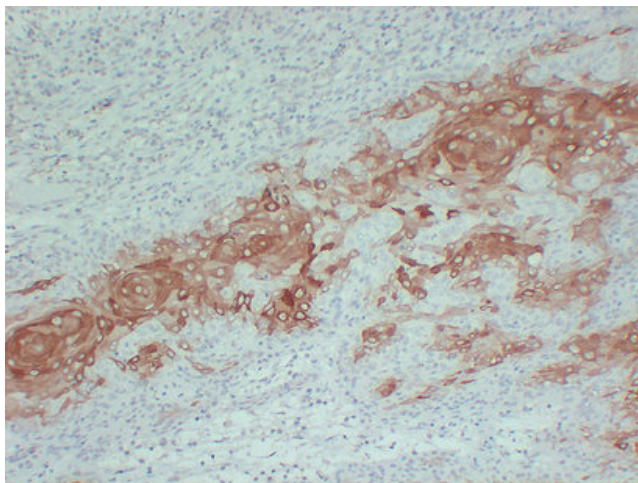
Product Type:	Primary Antibodies
Applications:	IHC
Recommended Dilution:	IHC-p: 1/100-1/500
Reactivity:	Human
Host:	Mouse
Isotype:	IgG3, kappa
Clonality:	Polyclonal
Immunogen:	Synthesized peptide derived from human Cytokeratin 10
Formulation:	Liquid in PBS containing 50% glycerol, 0.5% BSA and 0.02% sodium azide, pH 7.3.
Concentration:	lot specific
Purification:	Affinity Chromatography
Conjugation:	Unconjugated
Storage:	Store at 4°C short term. Aliquot and store at -20°C long term. Avoid freeze/thaw cycles.
Stability:	1 year
Gene Name:	keratin 10
Database Link:	<a href="#">Entrez Gene 3858 Human P13645</a>
Background:	Swiss-Prot Acc.P13645.
Synonyms:	CK-10; CK10; Cytokeratin-10; K10; Keratin-10; KPP



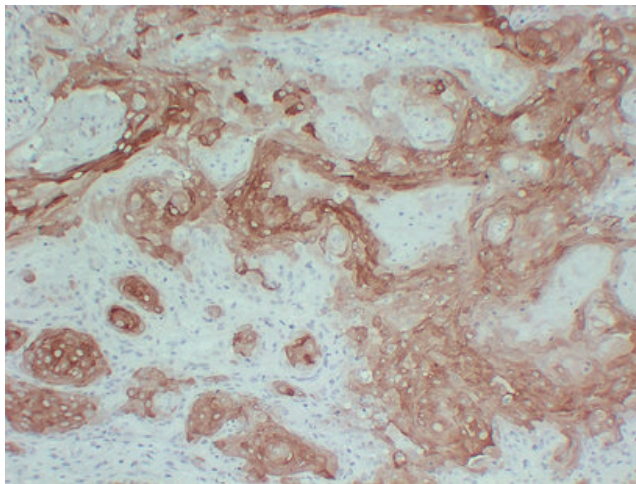
[View online »](#)

**Product images:**

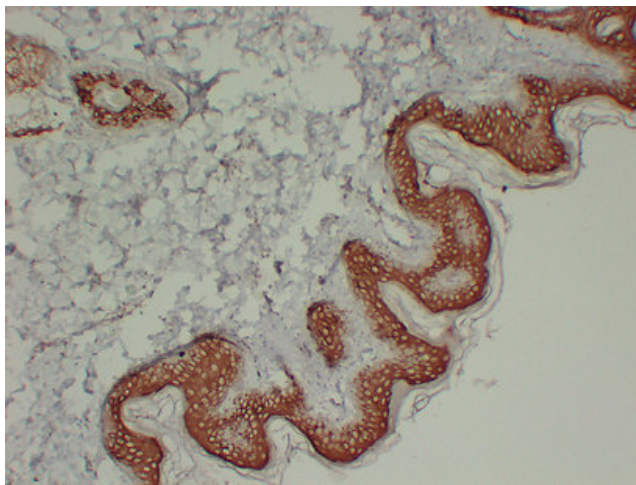
Immunohistochemical analysis of paraffin-embedded Cutaneous squamous cell carcinomas. 1, Antibody was diluted at 1:200(4°,overnight). 2, Citrate buffer of pH6.0 was used for antigen retrieval. 3,Secondary antibody was diluted at 1:200(room temperature, 30min).



Immunohistochemical analysis of paraffin-embedded Cutaneous squamous cell carcinomas. 1, Antibody was diluted at 1:200(4°,overnight). 2, Citrate buffer of pH6.0 was used for antigen retrieval. 3,Secondary antibody was diluted at 1:200(room temperature, 30min).



Immunohistochemical analysis of paraffin-embedded Cutaneous squamous cell carcinomas. 1, Antibody was diluted at 1:200(4°,overnight). 2, Citrate buffer of pH6. was used for antigen retrieval. 3,Secondary antibody was diluted at 1:200(room temperature, 30min).



Immunohistochemical analysis of paraffin-embedded Skin. 1, Antibody was diluted at 1:200(4°,overnight). 2, Citrate buffer of pH6.0 was used for antigen retrieval. 3,Secondary antibody was diluted at 1:200(room temperature, 30min).