

## Product datasheet for **TA384620M**

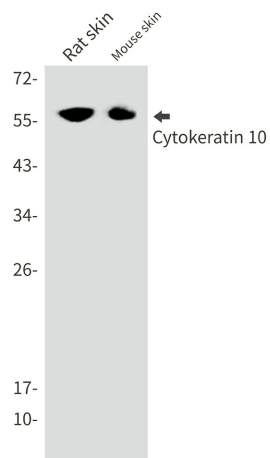
### Cytokeratin 10 (KRT10) Rabbit Monoclonal Antibody [Clone ID: R04-7A8]

#### Product data:

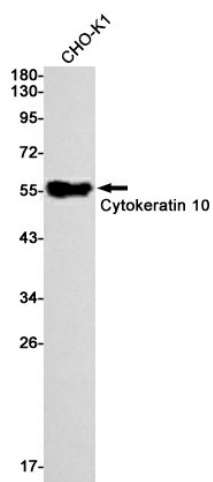
Product Type:	Primary Antibodies
Clone Name:	R04-7A8
Applications:	IHC, WB
Recommended Dilution:	WB: 1/1000 IHC: 1/50
Reactivity:	Human, Hamster, Mouse, Rat
Host:	Rabbit
Isotype:	IgG
Clonality:	Monoclonal
Immunogen:	A synthetic peptide of human Cytokeratin 10
Formulation:	50mM Tris-Glycine(pH 7.4), 0.15M NaCl, 40% Glycerol, 0.01% Sodium azide and 0.05% BSA
Concentration:	lot specific
Purification:	Affinity Purified
Conjugation:	Unconjugated
Storage:	Store at 4°C short term. Aliquot and store at -20°C long term. Avoid freeze/thaw cycles.
Stability:	1 year
Predicted Protein Size:	Calculated MW: 59 kDa; Observed MW: 59 kDa
Gene Name:	keratin 10
Database Link:	<a href="#">Entrez Gene 3858 Human P13645</a>
Background:	Swiss-Prot Acc.P13645.
Synonyms:	CK-10; CK10; Cytokeratin-10; K10; Keratin-10; KPP

[View online »](#)

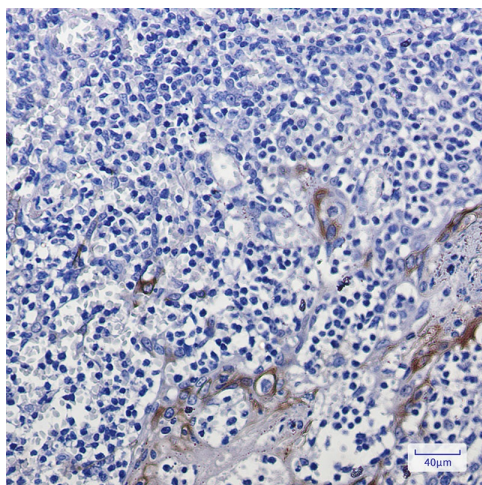
## Product images:



Western blot analysis of Cytokeratin 10 in rat skin, mouse skin lysates using Cytokeratin 10 antibody.



Western blot analysis of Cytokeratin 10 in CHO-K1 lysates using Cytokeratin 10 antibody.



Immunohistochemistry analysis of paraffin-embedded Human tonsil using Cytokeratin 10 antibody. High-pressure and temperature Sodium Citrate pH 6.0 was used for antigen retrieval.