

## Product datasheet for **TA384618**

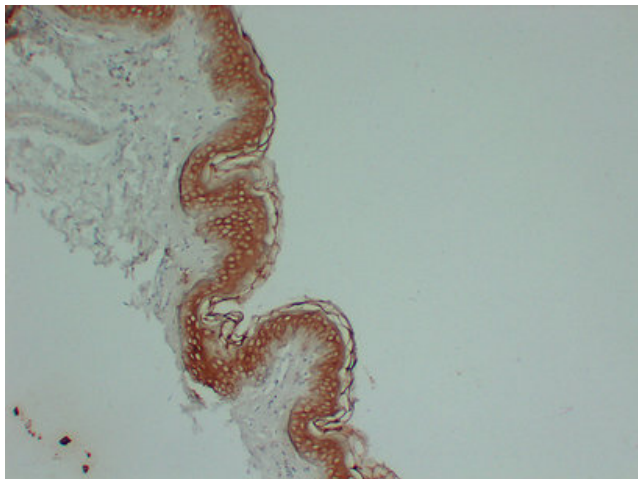
### Cytokeratin 1 (KRT1) Mouse Polyclonal Antibody

#### Product data:

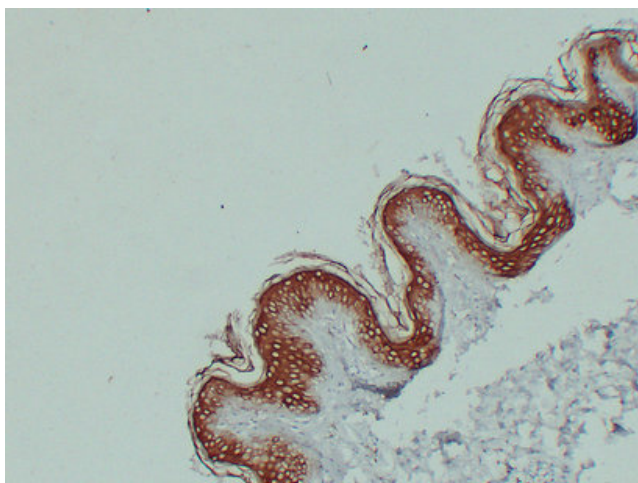
Product Type:	Primary Antibodies
Applications:	IHC
Recommended Dilution:	IHC-p: 1/100-1/500
Reactivity:	Human
Host:	Mouse
Isotype:	IgG1, kappa
Clonality:	Polyclonal
Immunogen:	Synthesized peptide derived from human Cytokeratin 1
Formulation:	Liquid in PBS containing 50% glycerol, 0.5% BSA and 0.02% sodium azide, pH 7.3.
Concentration:	lot specific
Purification:	Affinity Chromatography
Conjugation:	Unconjugated
Storage:	Store at 4°C short term. Aliquot and store at -20°C long term. Avoid freeze/thaw cycles.
Stability:	1 year
Gene Name:	keratin 1
Database Link:	<a href="#">Entrez Gene 3848 Human P04264</a>
Background:	Swiss-Prot Acc.P04264.
Synonyms:	CK-1; CK1; Cytokeratin-1; EHK; EHK1; EPPK; K1; Keratin-1; KRT1A; KRTA; NEPPK



[View online »](#)

**Product images:**

Immunohistochemical analysis of paraffin-embedded Skin. 1, Antibody was diluted at 1:200(4°,overnight). 2, Citric acid ,pH6.0 was used for antigen retrieval. 3,Secondary antibody was diluted at 1:200(room temperature, 30min).



Immunohistochemical analysis of paraffin-embedded Skin. 1, Antibody was diluted at 1:200(4°,overnight). 2, Citric acid ,pH6.0 was used for antigen retrieval. 3,Secondary antibody was diluted at 1:200(room temperature, 30min).