

## Product datasheet for TA384615M

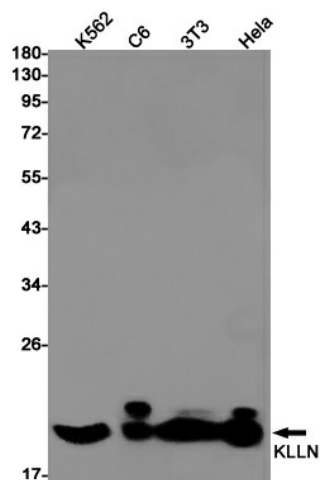
### KLLN Rabbit Monoclonal Antibody [Clone ID: R08-5C6]

#### Product data:

Product Type:	Primary Antibodies
Clone Name:	R08-5C6
Applications:	WB
Recommended Dilution:	WB: 1/1000
Reactivity:	Human, Mouse, Rat
Host:	Rabbit
Isotype:	IgG
Clonality:	Monoclonal
Immunogen:	A synthetic peptide of human KLLN
Formulation:	50mM Tris-Glycine(pH 7.4), 0.15M NaCl, 40% Glycerol, 0.01% Sodium azide and 0.05% BSA
Concentration:	lot specific
Purification:	Affinity Purified
Conjugation:	Unconjugated
Storage:	Store at 4°C short term. Aliquot and store at -20°C long term. Avoid freeze/thaw cycles.
Stability:	1 year
Predicted Protein Size:	Calculated MW: 20 kDa; Observed MW: 20 kDa
Gene Name:	killin, p53-regulated DNA replication inhibitor
Database Link:	<a href="#">Entrez Gene 100144748 Human B2CW77</a>
Background:	Swiss-Prot Acc.B2CW77.DNA-binding protein involved in S phase checkpoint control-coupled apoptosis by mediating p53/TP53-induced apoptosis. Has the ability to inhibit DNA synthesis and S phase arrest coupled to apoptosis. Has affinity to both double- and single-stranded DNA.
Synonyms:	CWS4; KILLIN


[View online »](#)

## Product images:



Western blot analysis of KLLN in K562, C6, 3T3, HeLa lysates using Killin antibody.