

## Product datasheet for **TA384615**

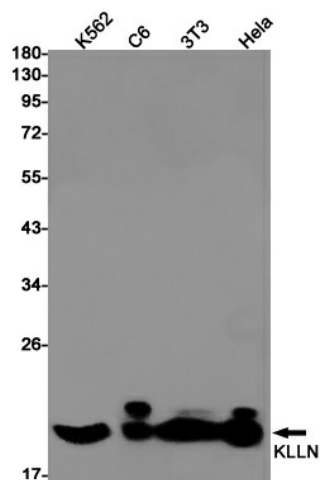
### **KLLN Rabbit Monoclonal Antibody [Clone ID: R08-5C6]**

#### **Product data:**

|                         |   |
|-------------------------|---|
| Product Type:           | Primary Antibodies  |
| Clone Name:             | R08-5C6   |
| Applications:           | WB  |
| Recommended Dilution:   | WB: 1/1000  |
| Reactivity:             | Human, Mouse, Rat   |
| Host:                   | Rabbit  |
| Isotype:                | IgG   |
| Clonality:              | Monoclonal  |
| Immunogen:              | A synthetic peptide of human KLLN   |
| Formulation:            | 50mM Tris-Glycine(pH 7.4), 0.15M NaCl, 40% Glycerol, 0.01% Sodium azide and 0.05% BSA   |
| Concentration:          | lot specific  |
| Purification:           | Affinity Purified   |
| Conjugation:            | Unconjugated  |
| Storage:                | Store at 4°C short term. Aliquot and store at -20°C long term. Avoid freeze/thaw cycles.  |
| Stability:              | 1 year  |
| Predicted Protein Size: | Calculated MW: 20 kDa; Observed MW: 20 kDa  |
| Gene Name:              | killin, p53-regulated DNA replication inhibitor   |
| Database Link:          | <a href="#">Entrez Gene 100144748 Human B2CW77</a>  |
| Background:             | Swiss-Prot Acc.B2CW77.DNA-binding protein involved in S phase checkpoint control-coupled apoptosis by mediating p53/TP53-induced apoptosis. Has the ability to inhibit DNA synthesis and S phase arrest coupled to apoptosis. Has affinity to both double- and single-stranded DNA. |
| Synonyms:               | CWS4; KILLIN  |

[View online »](#)

## Product images:



Western blot analysis of KLLN in K562, C6, 3T3, HeLa lysates using Killin antibody.