

## Product datasheet for **TA384612**

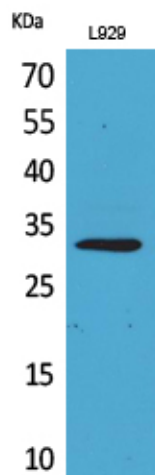
### **KLF13 Rabbit Polyclonal Antibody**

#### **Product data:**

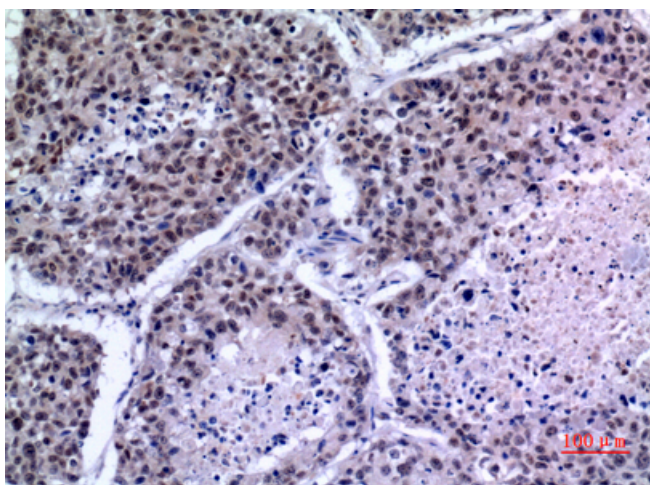
|                                |   |
|--------------------------------|---|
| <b>Product Type:</b>           | Primary Antibodies  |
| <b>Applications:</b>           | ELISA, IHC, WB  |
| <b>Recommended Dilution:</b>   | WB: 1/500-1/2000<br>IHC-p: 1/100-1/300<br>ELISA: 1/20000  |
| <b>Reactivity:</b>             | Human, Mouse  |
| <b>Host:</b>                   | Rabbit  |
| <b>Isotype:</b>                | IgG   |
| <b>Clonality:</b>              | Polyclonal  |
| <b>Immunogen:</b>              | The antiserum was produced against synthesized peptide derived from human KLF13 around the non-acetylation site of Lys166. AA range:131-180 |
| <b>Formulation:</b>            | Liquid in PBS containing 50% glycerol, 0.5% BSA and 0.02% sodium azide, pH 7.3.   |
| <b>Concentration:</b>          | lot specific  |
| <b>Purification:</b>           | Affinity Purified   |
| <b>Conjugation:</b>            | Unconjugated  |
| <b>Storage:</b>                | Store at 4°C short term. Aliquot and store at -20°C long term. Avoid freeze/thaw cycles.  |
| <b>Stability:</b>              | 1 year  |
| <b>Predicted Protein Size:</b> | Observed MW (kDa):31  |
| <b>Database Link:</b>          | <a href="#">Q9Y2Y9</a>  |
| <b>Background:</b>             | Swiss-Prot Acc.Q9Y2Y9.  |



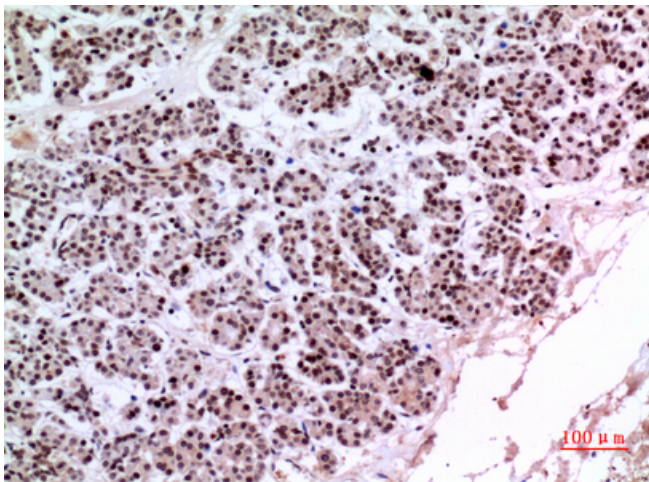
[View online »](#)

**Product images:**

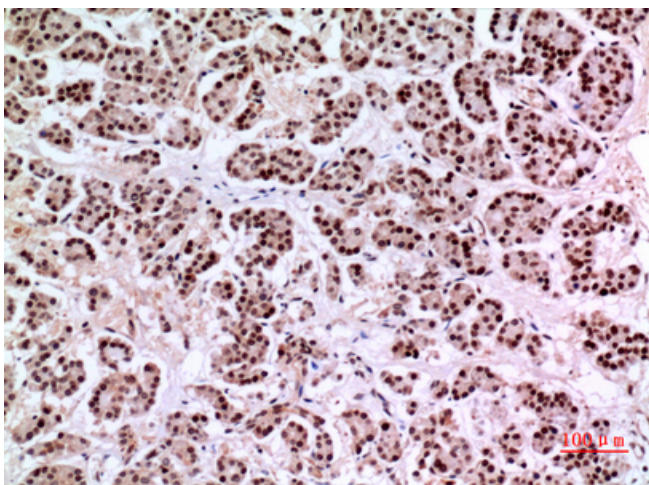
Western blot analysis of KLF13 in L929 lysates using KLF13 antibody.



Immunohistochemistry analysis of paraffin-embedded Human lung using KLF13 antibody. High-pressure and temperature Sodium Citrate pH 6.0 was used for antigen retrieval.



Immunohistochemistry analysis of paraffin-embedded Human pancreas using KLF13 antibody. High-pressure and temperature Sodium Citrate pH 6.0 was used for antigen retrieval.



Immunohistochemistry analysis of paraffin-embedded Human pancreas using KLF13 antibody. High-pressure and temperature Sodium Citrate pH 6.0 was used for antigen retrieval.