

Product datasheet for **TA384608**

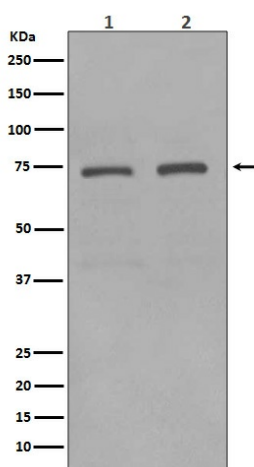
KIFC1 Rabbit Polyclonal Antibody

Product data:

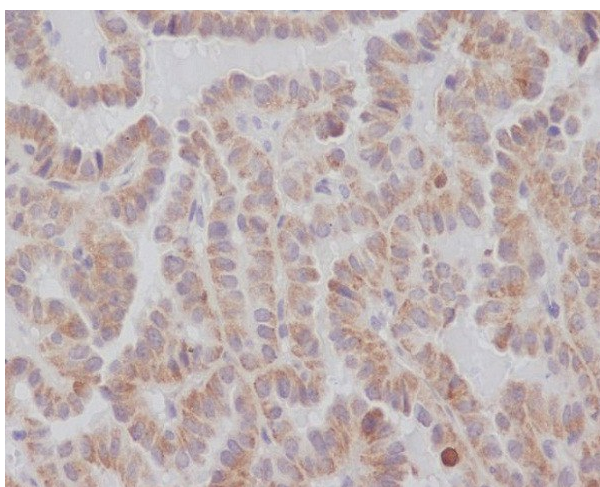
Product Type:	Primary Antibodies
Applications:	IF, IHC, IP, WB
Recommended Dilution:	WB: 1/1000-1/2000 IHC: 1/50-1/200 ICC/IF: 1/50-1/200 IP: 1/50
Reactivity:	Human
Host:	Rabbit
Isotype:	IgG
Clonality:	Polyclonal
Immunogen:	A synthesized peptide derived from human KIFC1
Formulation:	Rabbit IgG in phosphate buffered saline , pH 7.4, 150mM NaCl, 0.02% sodium azide and 50% glycerol.
Concentration:	lot specific
Purification:	Affinity Chromatography
Conjugation:	Unconjugated
Storage:	Store at 4°C short term. Aliquot and store at -20°C long term. Avoid freeze/thaw cycles.
Stability:	1 year
Predicted Protein Size:	74kDa
Gene Name:	kinesin family member C1
Database Link:	Entrez Gene 3833 Human Q9BW19
Background:	Swiss-Prot Acc.Q9BW19.Minus end-directed microtubule-dependent motor required for bipolar spindle formation. May contribute to movement of early endocytic vesicles.
Synonyms:	HSET; KNSL2; MGC1202; MGC149736; MGC149737



[View online »](#)

Product images:

Western blot analysis of KIFC1 expression in (1) HeLa cell lysate; (2) HepG2 cell lysate.



Immunohistochemical analysis of paraffin-embedded human thyroid carcinoma, using KIFC1 Antibody.