

Product datasheet for **TA384607**

KIF7 Mouse Monoclonal Antibody [Clone ID: 2A7-10B8-9A9]

Product data:

Product Type:	Primary Antibodies
Clone Name:	2A7-10B8-9A9
Applications:	IF, IHC
Recommended Dilution:	IHC: 1/200 IF: 1/50-200
Reactivity:	Human, Mouse, Rat
Host:	Mouse
Isotype:	IgG1
Clonality:	Monoclonal
Immunogen:	Synthetic Peptide of Kif 7
Formulation:	Liquid in PBS containing 50% glycerol, 0.5% BSA and 0.03% Proclin 300, pH 7.3.
Concentration:	lot specific
Purification:	Affinity Purified
Conjugation:	Unconjugated
Storage:	Store at 4°C short term. Aliquot and store at -20°C long term. Avoid freeze/thaw cycles.
Stability:	1 year
Gene Name:	kinesin family member 7
Database Link:	Entrez Gene 374654 Human Q2M1P5



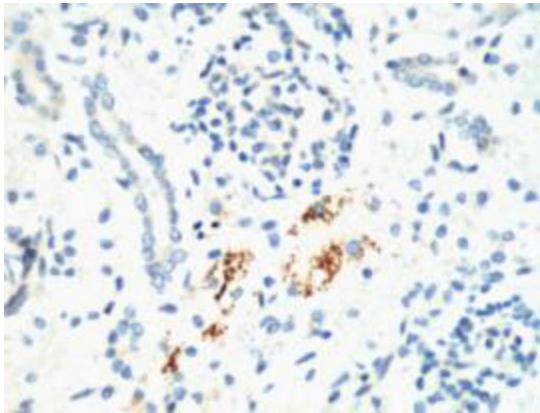
[View online »](#)

Background:

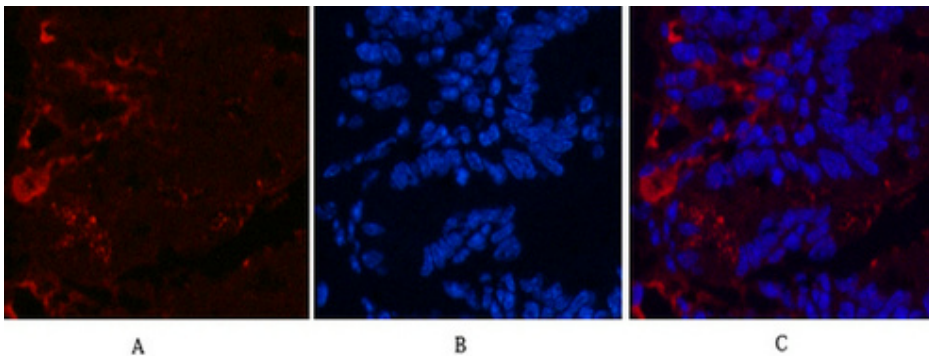
Swiss-Prot Acc.Q2M1P5.Essential for hedgehog signaling regulation: acts as both a negative and positive regulator of sonic hedgehog (Shh) and Indian hedgehog (Ihh) pathways, acting downstream of SMO, through both SUFU-dependent and -independent mechanisms (PubMed:21633164). Involved in the regulation of microtubular dynamics. Required for proper organization of the ciliary tip and control of ciliary localization of SUFU-GLI2 complexes . Required for localization of GLI3 to cilia in response to Shh. Negatively regulates Shh signaling by preventing inappropriate activation of the transcriptional activator GLI2 in the absence of ligand. Positively regulates Shh signaling by preventing the processing of the transcription factor GLI3 into its repressor form. In keratinocytes, promotes the dissociation of SUFU-GLI2 complexes, GLI2 nuclear translocation and Shh signaling activation . Involved in the regulation of epidermal differentiation and chondrocyte development .

Synonyms:

EQYK340; MGC120653; MGC138476; MGC138478; UNQ340

Product images:

Immunohistochemistry analysis of paraffin-embedded mouse Kidney tissue using KIF7 (2A7) antibody. High-pressure and temperature Sodium Citrate pH 6.0 was used for antigen retrieval.



Immunofluorescence analysis of KIF7 (2A7) in mouse colon using KIF7 (2A7) antibody (red), and DAPI (blue).