

Product datasheet for **TA384606M**

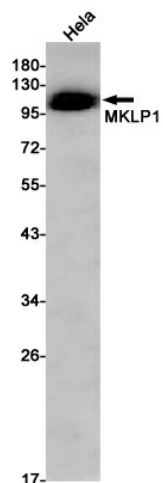
MKLP1 (KIF23) Rabbit Monoclonal Antibody [Clone ID: R07-2H3]

Product data:

Product Type:	Primary Antibodies
Clone Name:	R07-2H3
Applications:	WB
Recommended Dilution:	WB: 1/1000
Reactivity:	Human
Host:	Rabbit
Isotype:	IgG
Clonality:	Monoclonal
Immunogen:	A synthetic peptide of human MKLP1
Formulation:	50mM Tris-Glycine(pH 7.4), 0.15M NaCl, 40% Glycerol, 0.01% Sodium azide and 0.05% BSA
Concentration:	lot specific
Purification:	Affinity Purified
Conjugation:	Unconjugated
Storage:	Store at 4°C short term. Aliquot and store at -20°C long term. Avoid freeze/thaw cycles.
Stability:	1 year
Predicted Protein Size:	Calculated MW: 110 kDa; Observed MW: 110 kDa
Gene Name:	kinesin family member 23
Database Link:	Entrez Gene 9493 Human Q02241
Background:	Swiss-Prot Acc.Q02241.Component of the centralspindlin complex that serves as a microtubule-dependent and Rho-mediated signaling required for the myosin contractile ring formation during the cell cycle cytokinesis. Essential for cytokinesis in Rho-mediated signaling. Required for the localization of ECT2 to the central spindle. Plus-end-directed motor enzyme that moves antiparallel microtubules in vitro.
Synonyms:	CHO1; KNSL5; MKLP-1; MKLP1


[View online »](#)

Product images:



Western blot analysis of MKLP1 in HeLa lysates using MKLP1 antibody.