

Product datasheet for **TA384605**

MKLP1 (KIF23) Rabbit Polyclonal Antibody

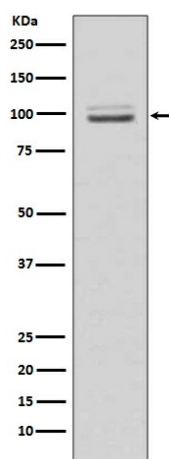
Product data:

Product Type:	Primary Antibodies
Applications:	IF, WB
Recommended Dilution:	WB: 1/500-1/2000 ICC/IF: 1/50-1/200
Reactivity:	Human, Mouse, Rat
Host:	Rabbit
Isotype:	IgG
Clonality:	Polyclonal
Immunogen:	A synthesized peptide derived from human MKLP1
Formulation:	Rabbit IgG in phosphate buffered saline , pH 7.4, 150mM NaCl, 0.02% sodium azide and 50% glycerol.
Concentration:	lot specific
Purification:	Affinity Chromatography
Conjugation:	Unconjugated
Storage:	Store at 4°C short term. Aliquot and store at -20°C long term. Avoid freeze/thaw cycles.
Stability:	1 year
Predicted Protein Size:	98kDa
Gene Name:	kinesin family member 23
Database Link:	Entrez Gene 9493 Human Q02241
Background:	Swiss-Prot Acc.Q02241.Plus-end-directed motor enzyme that moves antiparallel microtubules in vitro. Localizes to the interzone of mitotic spindles.
Synonyms:	CHO1; KNLS5; MKLP-1; MKLP1



[View online »](#)

Product images:



Western blot analysis of MKLP1 expression in HeLa cell lysate.