

Product datasheet for **TA384604S**

Eg5 (KIF11) Rabbit Monoclonal Antibody [Clone ID: R02-3H5]

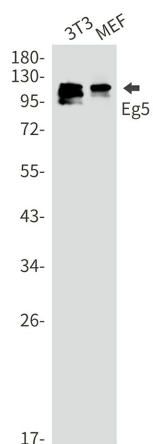
Product data:

Product Type:	Primary Antibodies
Clone Name:	R02-3H5
Applications:	IF, WB
Recommended Dilution:	WB: 1/1000 ICC/IF: 1/20
Reactivity:	Human, Mouse, Rat
Host:	Rabbit
Isotype:	IgG
Clonality:	Monoclonal
Immunogen:	Recombinant protein of human Eg5
Formulation:	50mM Tris-Glycine(pH 7.4), 0.15M NaCl, 40% Glycerol, 0.01% Sodium azide and 0.05% BSA
Concentration:	lot specific
Purification:	Affinity Purified
Conjugation:	Unconjugated
Storage:	Store at 4°C short term. Aliquot and store at -20°C long term. Avoid freeze/thaw cycles.
Stability:	1 year
Predicted Protein Size:	Calculated MW:119 kDa,Observed MW:119 kDa
Gene Name:	kinesin family member 11
Database Link:	Entrez Gene 3832 Human P52732
Synonyms:	EG5; HKSP; KNSL1; TRIP-5; TRIP5

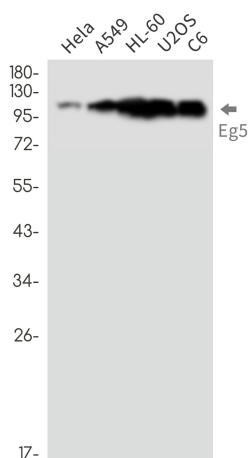


[View online »](#)

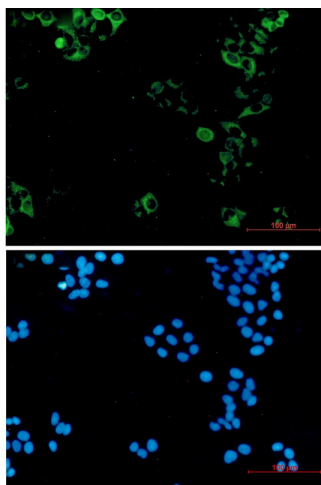
Product images:



Western blot analysis of Eg5 in 3T3, MEF lysates using Eg5 antibody.



Western blot analysis of Eg5 in HeLa, A549, HL-60, U2OS, C6 lysates using Eg5 antibody.



Immunocytochemistry analysis of Eg5 (green) in hela using Eg5 antibody, and DAPI(blue)