

## Product datasheet for **TA384604**

### **Eg5 (KIF11) Rabbit Monoclonal Antibody [Clone ID: R02-3H5]**

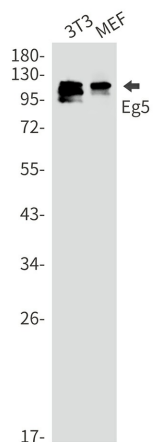
#### **Product data:**

|                         |  |
|-------------------------|--|
| Product Type:           | Primary Antibodies   |
| Clone Name:             | R02-3H5  |
| Applications:           | IF, WB   |
| Recommended Dilution:   | WB: 1/1000<br>ICC/IF: 1/20   |
| Reactivity:             | Human, Mouse, Rat  |
| Host:                   | Rabbit   |
| Isotype:                | IgG  |
| Clonality:              | Monoclonal   |
| Immunogen:              | Recombinant protein of human Eg5   |
| Formulation:            | 50mM Tris-Glycine(pH 7.4), 0.15M NaCl, 40% Glycerol, 0.01% Sodium azide and 0.05% BSA    |
| Concentration:          | lot specific   |
| Purification:           | Affinity Purified  |
| Conjugation:            | Unconjugated   |
| Storage:                | Store at 4°C short term. Aliquot and store at -20°C long term. Avoid freeze/thaw cycles. |
| Stability:              | 1 year   |
| Predicted Protein Size: | Calculated MW:119 kDa,Observed MW:119 kDa  |
| Gene Name:              | kinesin family member 11   |
| Database Link:          | <a href="#">Entrez Gene 3832 Human P52732</a>  |
| Synonyms:               | EG5; HKSP; KNSL1; TRIP-5; TRIP5  |

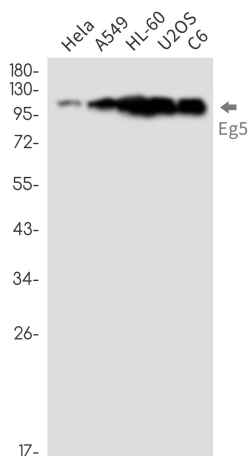


[View online »](#)

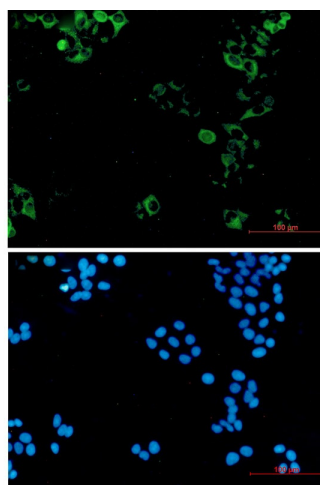
**Product images:**



Western blot analysis of Eg5 in 3T3, MEF lysates using Eg5 antibody.



Western blot analysis of Eg5 in HeLa, A549, HL-60, U2OS, C6 lysates using Eg5 antibody.



Immunocytochemistry analysis of Eg5 (green) in hela using Eg5 antibody, and DAPI (blue)