

Product datasheet for **TA384603**

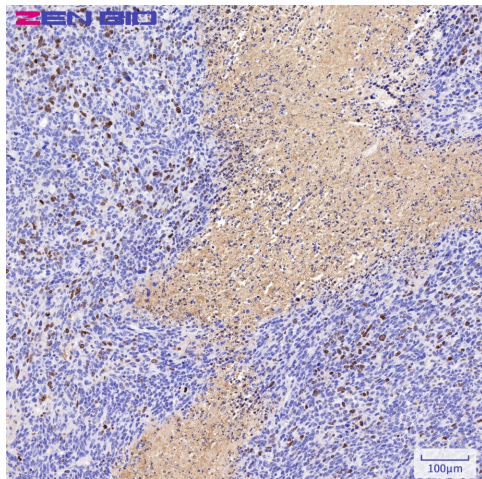
Ki67 (MKI67) Rat Monoclonal Antibody [Clone ID: 12B2]

Product data:

Product Type:	Primary Antibodies
Clone Name:	12B2
Applications:	IF, IHC
Recommended Dilution:	IHC: 1/50-1/200 ICC/IF: 1/50-1/200
Reactivity:	Human, Mouse
Host:	Rat
Isotype:	IgG2b
Clonality:	Monoclonal
Immunogen:	A synthesized peptide derived from human Ki67 aa 1816-2163.
Formulation:	Rat IgG in phosphate buffered saline , pH 7.4, 150mM NaCl and 0.02% sodium azide.
Concentration:	lot specific
Purification:	Affinity Chromatography
Conjugation:	Unconjugated
Storage:	Store at 2-8 °C. Avoid freeze/thaw cycles.
Stability:	1 year
Predicted Protein Size:	359kDa
Gene Name:	marker of proliferation Ki-67
Database Link:	Entrez Gene 4288 Human P46013
Background:	Swiss-Prot Acc.P46013.Required to maintain individual mitotic chromosomes dispersed in the cytoplasm following nuclear envelope disassembly(PubMed:27362226). Associates with the surface of the mitotic chromosome, the perichromosomal layer, and covers a substantial fraction of the chromosome surface (PubMed:27362226).
Synonyms:	KI67; KIA



[View online »](#)

Product images:

Immunohistochemistry of Ki67 in paraffin-embedded Human liver cancer in Chimera Mouse.