

Product datasheet for **TA384602**

Ki67 (MKI67) Mouse Monoclonal Antibody [Clone ID: 10B6-7D9-9H1]

Product data:

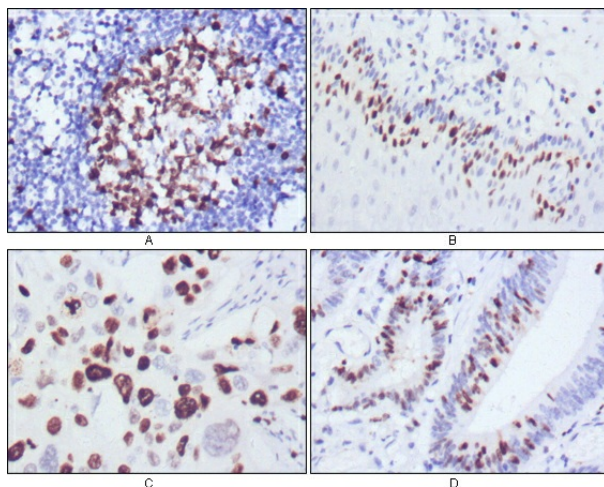
Product Type:	Primary Antibodies
Clone Name:	10B6-7D9-9H1
Applications:	IHC
Recommended Dilution:	IHC: 1/200-1/1000
Reactivity:	Human
Host:	Mouse
Isotype:	IgG2b
Clonality:	Monoclonal
Immunogen:	Synthetic peptide corresponding to aa (CEDLAGFKELFQTPG) of human Ki67, conjugated to KLH.
Formulation:	Liquid in PBS containing 50% glycerol, 0.5% BSA and 0.03% Proclin 300, pH 7.3.
Concentration:	lot specific
Purification:	Ascitic Fluid
Conjugation:	Unconjugated
Storage:	Store at 4°C short term. Aliquot and store at -20°C long term. Avoid freeze/thaw cycles.
Stability:	1 year
Predicted Protein Size:	358kDa
Gene Name:	marker of proliferation Ki-67
Database Link:	Entrez Gene 4288 Human P46013
Background:	Swiss-Prot Acc.P46013.Ki67, also known as MKI67, it is the prototypic cell cycle related nuclear protein, expressed by proliferating cells in all phases of the active cell cycle (G1, S, G2 and M phase). It is absent in resting (G0) cells. Ki67 antibodies are useful in establishing the cell growing fraction in neoplasms (immunohistochemically quantified by determining the number of Ki67 positive cells among the total number of resting cells = Ki67 index). In neoplastic tissues the prognostic value is comparable to the tritiated thymidine labelling index. The correlation between low Ki67 index and histologically low grade tumours is strong. Ki67 is routinely used as a neuronal marker of cell cycling and proliferation.



[View online »](#)

Synonyms: KI67; KIA

Product images:



Immunohistochemistry analysis of paraffin-embedded Human lymph node (A), esophagus (B), lung cancer (C), rectum cancer (D), using Ki67 (10B6) antibody with DAB staining. High-pressure and temperature Sodium Citrate pH 6.0 was used for antigen retrieval.