

Product datasheet for **TA384599M**

KEAP1 Rabbit Monoclonal Antibody [Clone ID: R02-1H7]

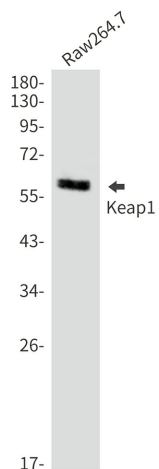
Product data:

Product Type:	Primary Antibodies
Clone Name:	R02-1H7
Applications:	IHC, WB
Recommended Dilution:	WB: 1/1000 IHC: 1/50
Reactivity:	Human, Mouse
Host:	Rabbit
Isotype:	IgG
Clonality:	Monoclonal
Immunogen:	Recombinant protein of human Keap1
Formulation:	50mM Tris-Glycine(pH 7.4), 0.15M NaCl, 40% Glycerol, 0.01% Sodium azide and 0.05% BSA
Concentration:	lot specific
Purification:	Affinity Purified
Conjugation:	Unconjugated
Storage:	Store at 4°C short term. Aliquot and store at -20°C long term. Avoid freeze/thaw cycles.
Stability:	1 year
Predicted Protein Size:	Calculated MW:70 kDa,Observed MW:60-64 kDa
Gene Name:	kelch like ECH associated protein 1
Database Link:	Entrez Gene 9817 Human Q14145
Background:	This gene encodes a protein containing KELCH-1 like domains, as well as a BTB/POZ domain. Kelch-like ECH-associated protein 1 interacts with NF-E2-related factor 2 in a redox-sensitive manner and the dissociation of the proteins in the cytoplasm is followed by transportation of NF-E2-related factor 2 to the nucleus. This interaction results in the expression of the catalytic subunit of gamma-glutamylcysteine synthetase. Two alternatively spliced transcript variants encoding the same isoform have been found for this gene. [provided by RefSeq, Jul 2008]
Synonyms:	INrf2; KIAA0132; KLHL19; MGC1114; MGC4407; MGC9454; MGC10630; MGC20887

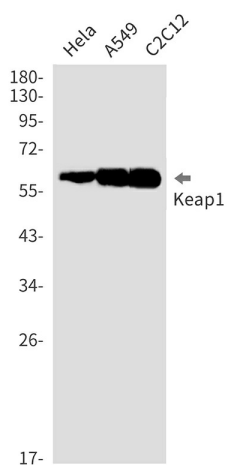


[View online »](#)

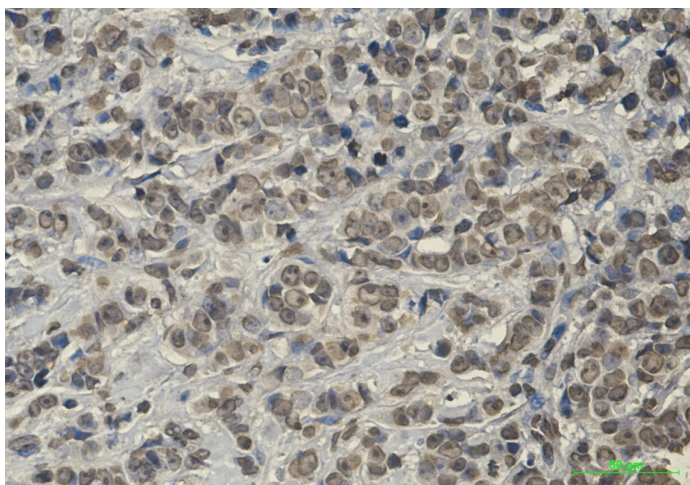
Product images:



Western blot analysis of Keap1 in Raw264.7 lysates using Keap1 antibody.



Western blot analysis of Keap1 in HeLa, A549, C2C12 lysates using Keap1 antibody.



Immunohistochemistry analysis of paraffin-embedded Human breast cancer using Keap1 antibody. High-pressure and temperature Sodium Citrate pH 6.0 was used for antigen retrieval.