

## Product datasheet for **TA384598**

### VEGF Receptor 2 (KDR) Rabbit Polyclonal Antibody

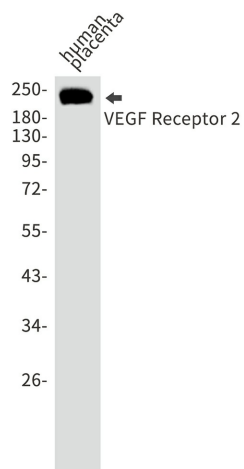
#### Product data:

Product Type:	Primary Antibodies
Applications:	IP, WB
Recommended Dilution:	WB: 1/2000 IP: 1/20
Reactivity:	Human
Host:	Rabbit
Isotype:	IgG
Clonality:	Polyclonal
Immunogen:	Recombinant protein of human VEGF Receptor 2
Formulation:	50mM Tris-Glycine(pH 7.4), 0.15M NaCl, 40% Glycerol, 0.01% Sodium azide and 0.05% BSA
Concentration:	lot specific
Purification:	Affinity Purified
Conjugation:	Unconjugated
Storage:	Store at 4°C short term. Aliquot and store at -20°C long term. Avoid freeze/thaw cycles.
Stability:	1 year
Predicted Protein Size:	Calculated MW: 152 kDa; Observed MW: 230,210 kDa
Gene Name:	kinase insert domain receptor
Database Link:	<a href="#">Entrez Gene 3791 Human P35968</a>
Background:	Swiss-Prot Acc.P35968.
Synonyms:	CD309; FLK1; VEGFR; VEGFR-2; VEGFR2



[View online »](#)

## Product images:



Western blot analysis of VEGF Receptor 2 in Human placenta lysates using VEGF Receptor 2 antibody.