

## Product datasheet for **TA384597**

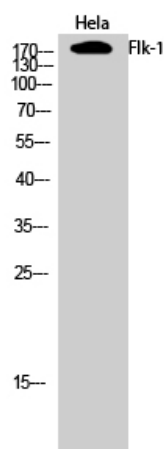
### VEGF Receptor 2 (KDR) Rabbit Polyclonal Antibody

#### Product data:

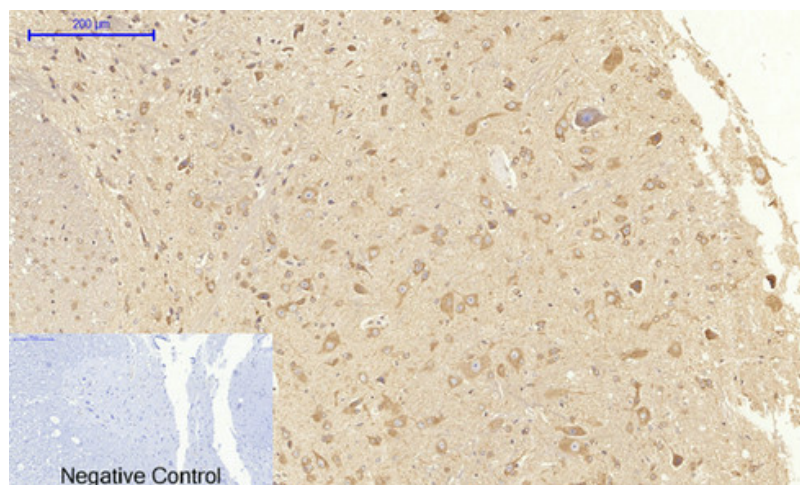
Product Type:	Primary Antibodies
Applications:	ELISA, IF, IHC, WB
Recommended Dilution:	WB: 1/500-1/2000 IHC: 1/100-1/300 IF: 1/200-1/1000 ELISA: 1/20000
Reactivity:	Human, Mouse
Host:	Rabbit
Isotype:	IgG
Clonality:	Polyclonal
Immunogen:	The antiserum was produced against synthesized peptide derived from human VEGFR2. AA range:917-966
Formulation:	Liquid in PBS containing 50% glycerol, 0.5% BSA and 0.02% sodium azide, pH 7.3.
Concentration:	lot specific
Purification:	Affinity Purified
Conjugation:	Unconjugated
Storage:	Store at 4°C short term. Aliquot and store at -20°C long term. Avoid freeze/thaw cycles.
Stability:	1 year
Predicted Protein Size:	Observed MW (kDa):210/230
Gene Name:	kinase insert domain receptor
Database Link:	<a href="#">Entrez Gene 3791 Human P35968</a>
Background:	Swiss-Prot Acc.P35968.
Synonyms:	CD309; FLK1; VEGFR; VEGFR-2; VEGFR2



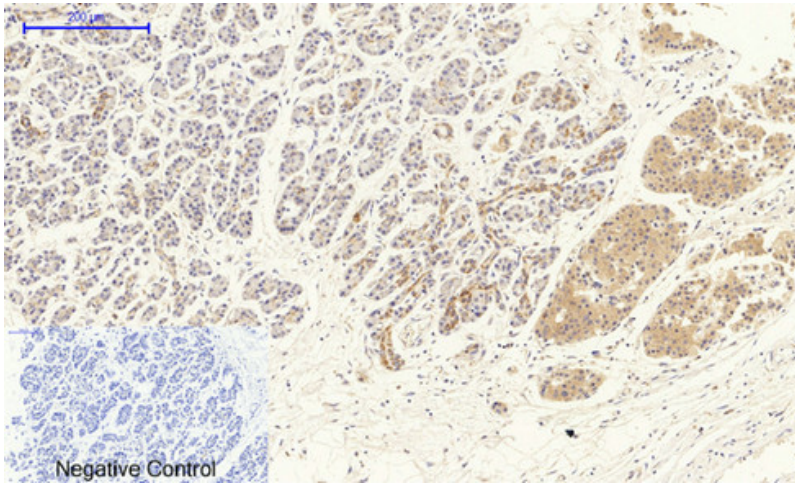
[View online »](#)

**Product images:**

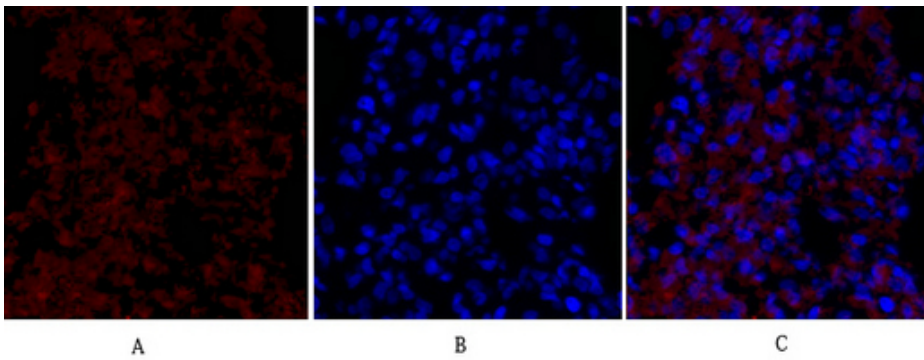
Western blot analysis of VEGF Receptor 2 in HeLa lysates using VEGF Receptor 2 antibody.



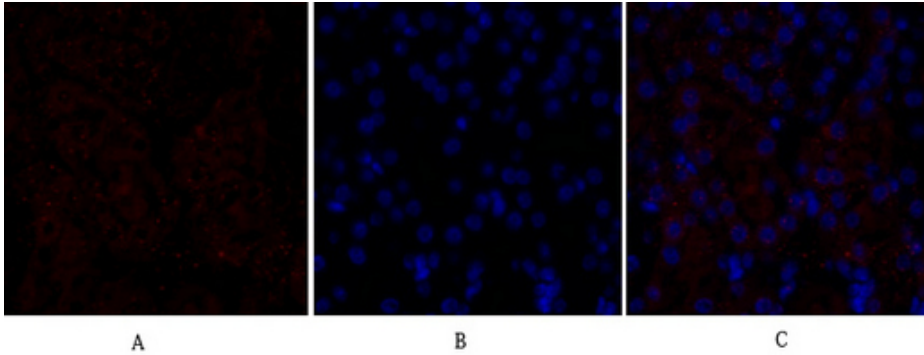
Immunohistochemistry analysis of paraffin-embedded rat spinalcord using Flk1 antibody. High-pressure and temperature Sodium Citrate pH 6.0 was used for antigen retrieval. Sample with blocking peptide on the right.



Immunohistochemistry analysis of paraffin-embedded Human stomach cancer using Flk1 antibody. High-pressure and temperature Sodium Citrate pH 6.0 was used for antigen retrieval. Negative control was used by secondary antibody only.



Immunofluorescence analysis of VEGF Receptor 2 in rat lung using Flk1 antibody (red), and DAPI (blue).



Immunofluorescence analysis of VEGF Receptor 2 in mouse kidney using VEGF Receptor 2 antibody (red), and DAPI (blue).