

## Product datasheet for **TA384596S**

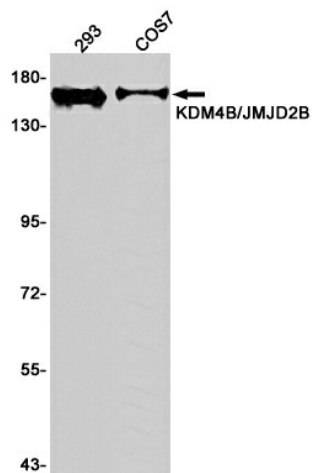
### **KDM4B Rabbit Monoclonal Antibody [Clone ID: R08-9G9]**

#### **Product data:**

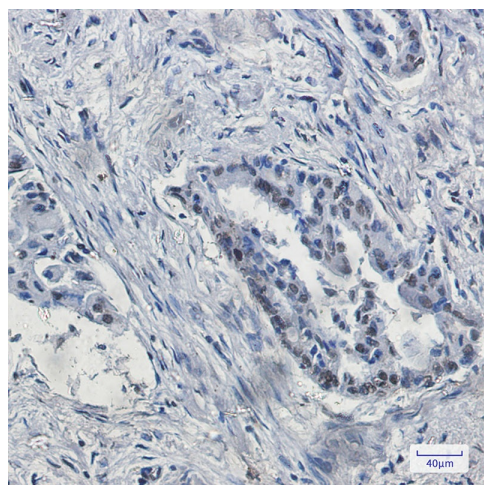
Product Type:	Primary Antibodies
Clone Name:	R08-9G9
Applications:	IF, IHC, WB
Recommended Dilution:	WB: 1/1000 IHC: 1/20 ICC/IF: 1/2000
Reactivity:	Human
Host:	Rabbit
Isotype:	IgG
Clonality:	Monoclonal
Immunogen:	A synthetic peptide of human KDM4B/JMJD2B
Formulation:	50mM Tris-Glycine(pH 7.4), 0.15M NaCl, 40% Glycerol, 0.01% Sodium azide and 0.05% BSA
Concentration:	lot specific
Purification:	Affinity Purified
Conjugation:	Unconjugated
Storage:	Store at 4°C short term. Aliquot and store at -20°C long term. Avoid freeze/thaw cycles.
Stability:	1 year
Predicted Protein Size:	Calculated MW: 122 kDa; Observed MW: 150 kDa
Gene Name:	lysine demethylase 4B
Database Link:	<a href="#">Entrez Gene 23030 Human O94953</a>
Background:	Swiss-Prot Acc.O94953.Histone demethylase that specifically demethylates 'Lys-9' of histone H3, thereby playing a role in histone code. Does not demethylate histone H3 'Lys-4', H3 'Lys-27', H3 'Lys-36' nor H4 'Lys-20'. Only able to demethylate trimethylated H3 'Lys-9', with a weaker activity than KDM4A, KDM4C and KDM4D. Demethylation of Lys residue generates formaldehyde and succinate.
Synonyms:	FLJ44906; JHDM3B; JMJD2B; KIAA0876



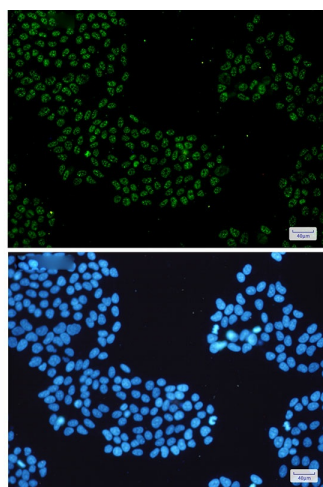
[View online »](#)

**Product images:**

Western blot analysis of KDM4B in 293, COS7 lysates using KDM4B antibody.



Immunohistochemistry analysis of paraffin-embedded Human lung cancer using KDM4B/JMJ2B antibody. High-pressure and temperature Sodium Citrate pH 6.0 was used for antigen retrieval.



Immunocytochemistry analysis of KDM4B/JMJD2B(green) in HeLa using KDM4B/JMJD2B antibody, and DAPI(blue)