

## Product datasheet for **TA384595**

### **KDM4A Rabbit Polyclonal Antibody**

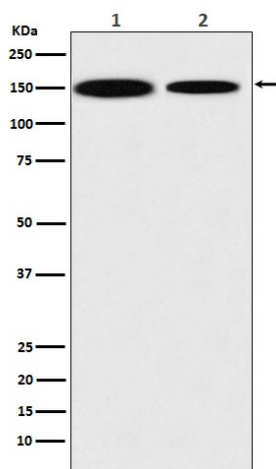
#### **Product data:**

|                                |   |
|--------------------------------|---|
| <b>Product Type:</b>           | Primary Antibodies  |
| <b>Applications:</b>           | IHC, IP, WB   |
| <b>Recommended Dilution:</b>   | WB: 1/500-1/2000<br>IHC: 1/50-1/200<br>IP: 1/60   |
| <b>Reactivity:</b>             | Human, Mouse, Rat   |
| <b>Host:</b>                   | Rabbit  |
| <b>Isotype:</b>                | IgG   |
| <b>Clonality:</b>              | Polyclonal  |
| <b>Immunogen:</b>              | A synthesized peptide derived from human KDM4A / JHDM3A / JMJD2A  |
| <b>Formulation:</b>            | Rabbit IgG in phosphate buffered saline , pH 7.4, 150mM NaCl, 0.02% sodium azide and 50% glycerol.  |
| <b>Concentration:</b>          | lot specific  |
| <b>Purification:</b>           | Affinity Chromatography   |
| <b>Conjugation:</b>            | Unconjugated  |
| <b>Storage:</b>                | Store at 4°C short term. Aliquot and store at -20°C long term. Avoid freeze/thaw cycles.  |
| <b>Stability:</b>              | 1 year  |
| <b>Predicted Protein Size:</b> | 150kDa  |
| <b>Gene Name:</b>              | lysine demethylase 4A   |
| <b>Database Link:</b>          | <a href="#">Entrez Gene 9682 Human O75164</a>   |
| <b>Background:</b>             | Swiss-Prot Acc.O75164.Histone demethylase that specifically demethylates 'Lys-9' and 'Lys-36' residues of histone H3, thereby playing a central role in histone code. Does not demethylate histone H3 'Lys-4', H3 'Lys-27' nor H4 'Lys-20'. Demethylates trimethylated H3 'Lys-9' and H3 'Lys-36' residue, while it has no activity on mono- and dimethylated residues. |
| <b>Synonyms:</b>               | JHDM3A; JMJD2; JMJD2A; KIAA0677   |



[View online »](#)

## Product images:



Western blot analysis of KDM4A / JHDM3A / JMJD2A in (1) HEK293 lysates; (2) NIH3T3 lysates using KDM4A antibody.