

## Product datasheet for **TA384593M**

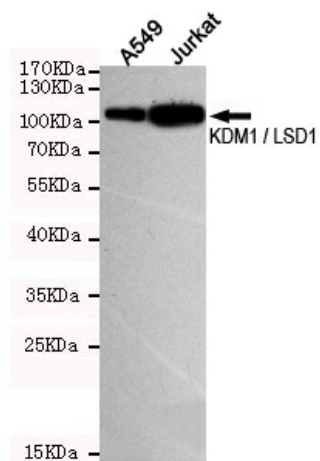
### **KDM1A Mouse Monoclonal Antibody [Clone ID: 1B2-E5-G3]**

#### **Product data:**

Product Type:	Primary Antibodies
Clone Name:	1B2-E5-G3
Applications:	WB
Recommended Dilution:	WB: 1/500-1/2000
Reactivity:	Human, Mouse, Monkey
Host:	Mouse
Isotype:	IgG1
Clonality:	Monoclonal
Immunogen:	Purified recombinant fragment of human LSD1 expressed in E. Coli.
Formulation:	Liquid in PBS containing 50% glycerol, 0.5% BSA and 0.03% Proclin 300, pH 7.3.
Concentration:	lot specific
Purification:	Ascitic Fluid
Conjugation:	Unconjugated
Storage:	Store at 4°C short term. Aliquot and store at -20°C long term. Avoid freeze/thaw cycles.
Stability:	1 year
Predicted Protein Size:	93kDa
Gene Name:	lysine demethylase 1A
Database Link:	<a href="#">Entrez Gene 23028 Human O60341</a>
Background:	Swiss-Prot Acc.O60341.The amine oxidase domain 2 (AOF2) gene encodes a nuclear protein (LSD1, ~95kDa) containing a Swirm domain, a FAD-binding motif, and an amine oxidase domain. This protein is a component of several histone deacetylase complexes, though it silences genes by functioning as a histone demethylase. LSD1 is a chromatin-modifying enzyme, which serve as a docking module for the stabilization of the associated corepressor complex (es) on chromatin.
Synonyms:	AOF2; BHC110; KDM1; LSD1



[View online »](#)

**Product images:**

Western blot detection of KDM1 / LSD1 in A549 and Jurkat cell lysates using KDM1 / LSD1 mouse mAb (dilution 1:500). Predicted band size: 93 Kda. Observed band size: 93KDa.