

## Product datasheet for **TA384592**

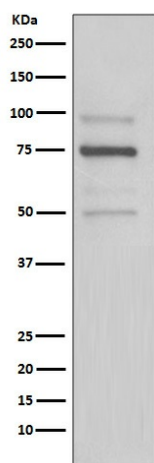
### **KDEL<sup>R1</sup> Rabbit Polyclonal Antibody**

#### **Product data:**

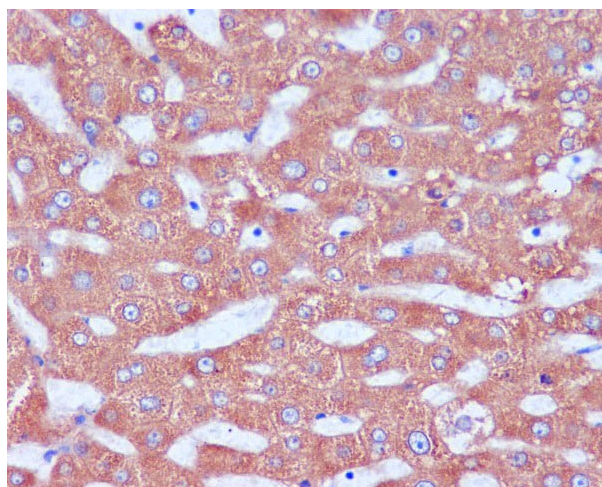
<b>Product Type:</b>	Primary Antibodies
<b>Applications:</b>	FC, IF, IHC, WB
<b>Recommended Dilution:</b>	WB: 1/500-1/2000 IHC: 1/50-1/200 ICC/IF: 1/50-1/200 FC: 1/50
<b>Reactivity:</b>	Human, Mouse, Rat
<b>Host:</b>	Rabbit
<b>Isotype:</b>	IgG
<b>Clonality:</b>	Polyclonal
<b>Immunogen:</b>	A synthesized peptide derived from human KDEL
<b>Formulation:</b>	Rabbit IgG in phosphate buffered saline , pH 7.4, 150mM NaCl, 0.02% sodium azide and 50% glycerol.
<b>Concentration:</b>	lot specific
<b>Purification:</b>	Affinity Chromatography
<b>Conjugation:</b>	Unconjugated
<b>Storage:</b>	Store at 4°C short term. Aliquot and store at -20°C long term. Avoid freeze/thaw cycles.
<b>Stability:</b>	1 year
<b>Predicted Protein Size:</b>	78KD
<b>Database Link:</b>	<a href="#">P24390</a>
<b>Background:</b>	Swiss-Prot Acc.P24390.Determines the specificity of the luminal ER protein retention system.Required for the retention of luminal endoplasmic reticulum proteins. Determines the specificity of the luminal ER protein retention system. Also required for normal vesicular traffic through the Golgi. This receptor recognizes K-D-E-L.



[View online »](#)

**Product images:**

Western blot analysis of KDEL expression in HeLa cell lysate.



Immunohistochemical analysis of paraffin-embedded human liver, using KDEL Antibody.