

## Product datasheet for **TA384590S**

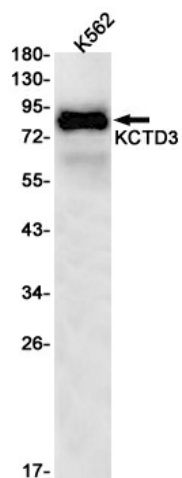
### **KCTD3 Rabbit Monoclonal Antibody [Clone ID: R09-8H3]**

#### **Product data:**

Product Type:	Primary Antibodies
Clone Name:	R09-8H3
Applications:	WB
Recommended Dilution:	WB: 1/1000
Reactivity:	Human
Host:	Rabbit
Isotype:	IgG
Clonality:	Monoclonal
Immunogen:	Recombinant protein of human KCTD3
Formulation:	50mM Tris-Glycine(pH 7.4), 0.15M NaCl, 40% Glycerol, 0.01% Sodium azide and 0.05% BSA
Concentration:	lot specific
Purification:	Affinity Purified
Conjugation:	Unconjugated
Storage:	Store at 4°C short term. Aliquot and store at -20°C long term. Avoid freeze/thaw cycles.
Stability:	1 year
Predicted Protein Size:	Calculated MW: 89 kDa; Observed MW: 89 kDa
Gene Name:	potassium channel tetramerization domain containing 3
Database Link:	<a href="#">Entrez Gene 51133 Human Q9Y597</a>
Background:	Swiss-Prot Acc.Q9Y597.BTB/POZ domain-containing protein KCTD3
Synonyms:	MGC43935; NY-REN-45

[View online »](#)

## Product images:



Western blot analysis of KCTD3 in K562 lysates using KCTD3 antibody.