

## Product datasheet for TA384589S

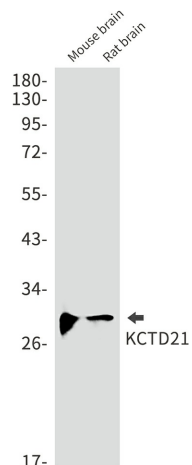
### KCTD21 Rabbit Monoclonal Antibody [Clone ID: R02-4B5]

#### Product data:

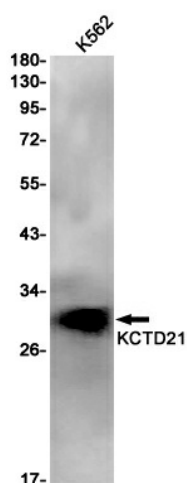
Product Type:	Primary Antibodies
Clone Name:	R02-4B5
Applications:	WB
Recommended Dilution:	WB: 1/1000
Reactivity:	Human, Mouse, Rat
Host:	Rabbit
Isotype:	IgG
Clonality:	Monoclonal
Immunogen:	Recombinant protein of human KCTD21
Formulation:	50mM Tris-Glycine(pH 7.4), 0.15M NaCl, 40% Glycerol, 0.01% Sodium azide and 0.05% BSA
Concentration:	lot specific
Purification:	Affinity Purified
Conjugation:	Unconjugated
Storage:	Store at 4°C short term. Aliquot and store at -20°C long term. Avoid freeze/thaw cycles.
Stability:	1 year
Predicted Protein Size:	Calculated MW: 30 kDa; Observed MW: 30 kDa
Gene Name:	potassium channel tetramerization domain containing 21
Database Link:	<a href="#">Entrez Gene 283219 Human Q4G0X4</a>
Background:	Swiss-Prot Acc.Q4G0X4.Probable substrate-specific adapter of a BCR (BTB-CUL3-RBX1) E3 ubiquitin-protein ligase complex mediating the ubiquitination and subsequent proteasomal degradation of target proteins. Promotes the ubiquitination of HDAC1. Can function as antagonist of the Hedgehog pathway by affecting the nuclear transfer of transcription factor GLI1; the function probably occurs via HDAC1 down-regulation, keeping GLI1 acetylated and inactive. Inhibits cell growth and tumorigenicity of medulloblastoma (MDB) (PubMed:21472142).
Synonyms:	Kctd21


[View online »](#)

## Product images:



Western blot analysis of KCTD21 in mouse brain, rat brain lysates using KCTD21 antibody.



Western blot analysis of KCTD21 in K562 lysates using KCTD21 antibody.