

Product datasheet for **TA384585**

JUNB Rabbit Polyclonal Antibody

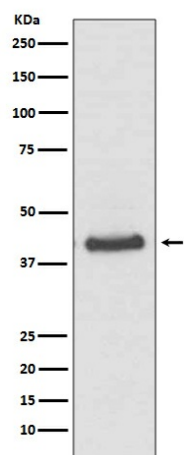
Product data:

Product Type:	Primary Antibodies
Applications:	IF, IP, WB
Recommended Dilution:	WB: 1/1000-1/2000 ICC/IF: 1/50-1/200 IP: 1/50
Reactivity:	Human, Mouse, Rat
Host:	Rabbit
Isotype:	IgG
Clonality:	Polyclonal
Immunogen:	A synthesized peptide derived from human JunB
Formulation:	Rabbit IgG in phosphate buffered saline , pH 7.4, 150mM NaCl, 0.02% sodium azide and 50% glycerol.
Concentration:	lot specific
Purification:	Affinity Chromatography
Conjugation:	Unconjugated
Storage:	Store at 4°C short term. Aliquot and store at -20°C long term. Avoid freeze/thaw cycles.
Stability:	1 year
Predicted Protein Size:	43kDa
Gene Name:	JunB proto-oncogene, AP-1 transcription factor subunit
Database Link:	Entrez Gene 3726 Human P17275
Background:	Swiss-Prot Acc.P17275.JunB is a basic region, leucine zipper (bZIP) transcription factor belonging to the Jun family that includes c-Jun and JunD. Jun family members homodimerize or heterodimerize with Fos and ATF proteins to form a functional transcription factor AP-1 (activator protein, whose activity is regulated by a variety of physiological and pathological stimuli such as growth factors, infections, and stress signals.
Synonyms:	AP-1



[View online »](#)

Product images:



Western blot analysis of JunB in HeLa lysates using JunB antibody.