

Product datasheet for **TA384584**

c-Jun (JUN) Rabbit Polyclonal Antibody

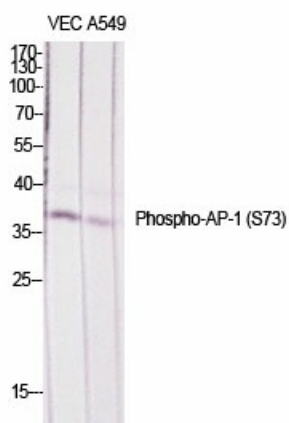
Product data:

Product Type:	Primary Antibodies
Applications:	ELISA, IHC, WB
Recommended Dilution:	WB: 1/500-1/2000 IHC: 1/100-1/300 ELISA: 1/10000
Reactivity:	Human, Mouse, Rat
Host:	Rabbit
Isotype:	IgG
Clonality:	Polyclonal
Immunogen:	The antiserum was produced against synthesized peptide derived from human c-Jun around the phosphorylation site of Ser73. AA range:40-89 (Phosphorylated)
Formulation:	Liquid in PBS containing 50% glycerol, 0.5% BSA and 0.02% sodium azide, pH 7.3.
Concentration:	lot specific
Purification:	Affinity Purified
Conjugation:	Unconjugated
Storage:	Store at 4°C short term. Aliquot and store at -20°C long term. Avoid freeze/thaw cycles.
Stability:	1 year
Predicted Protein Size:	Observed MW (kDa):36
Gene Name:	Jun proto-oncogene, AP-1 transcription factor subunit
Database Link:	Entrez Gene 3725 Human P05412
Background:	Swiss-Prot Acc.P05412/P17535.
Synonyms:	AP-1; AP1; c-Jun; p39

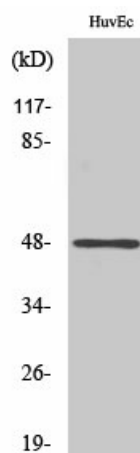


[View online »](#)

Product images:



Western blot analysis of Phospho-JunD (Ser73/100) in various lysates using Phospho-JunD (Ser73/100) antibody.



Western blot analysis of Phospho-JunD (Ser73/100) in HuvEc lysates using Phospho-AP1/Jun D (S73/100) antibody.