

Product datasheet for **TA384582**

c-Jun (JUN) Rabbit Polyclonal Antibody

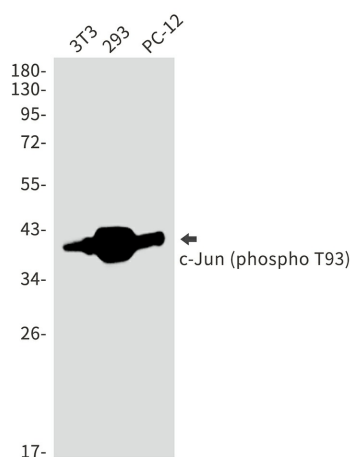
Product data:

Product Type:	Primary Antibodies
Applications:	IP, WB
Recommended Dilution:	WB: 1/1000 IP: 1/20
Reactivity:	Human, Mouse
Host:	Rabbit
Isotype:	IgG
Clonality:	Polyclonal
Immunogen:	A synthetic phosphopeptide corresponding to residues surrounding Thr93 of human c-Jun (Phosphorylated)
Formulation:	50mM Tris-Glycine(pH 7.4), 0.15M NaCl, 40% Glycerol, 0.01% Sodium azide and 0.05% BSA
Concentration:	lot specific
Purification:	Affinity Purified
Conjugation:	Unconjugated
Storage:	Store at 4°C short term. Aliquot and store at -20°C long term. Avoid freeze/thaw cycles.
Stability:	1 year
Predicted Protein Size:	Calculated MW: 36 kDa; Observed MW: 36 kDa
Gene Name:	Jun proto-oncogene, AP-1 transcription factor subunit
Database Link:	Entrez Gene 3725 Human P05412
Background:	Swiss-Prot Acc.P05412.
Synonyms:	AP-1; AP1; c-Jun; p39



[View online »](#)

Product images:



Western blot analysis of Phospho-c-Jun (Thr93) in 3T3, 293, PC-12 lysates using Phospho-c-Jun (Thr93) antibody.