

Product datasheet for **TA384581**

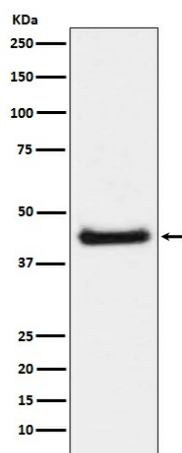
c-Jun (JUN) Rabbit Polyclonal Antibody

Product data:

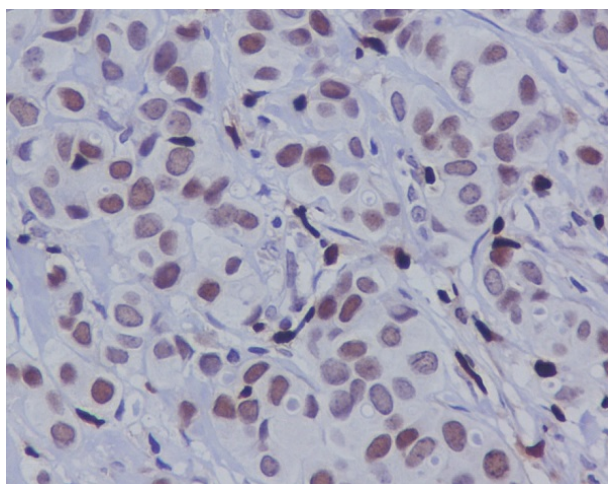
Product Type:	Primary Antibodies
Applications:	IF, IHC, WB
Recommended Dilution:	WB: 1/500-1/2000 IHC: 1/50-1/200 ICC/IF: 1/50-1/200
Reactivity:	Human, Mouse, Rat
Host:	Rabbit
Isotype:	IgG
Clonality:	Polyclonal
Immunogen:	A synthesized peptide derived from human Phospho-c-Jun (S63) (Phosphorylated)
Formulation:	Rabbit IgG in phosphate buffered saline , pH 7.4, 150mM NaCl, 0.02% sodium azide and 50% glycerol.
Concentration:	lot specific
Purification:	Affinity Chromatography
Conjugation:	Unconjugated
Storage:	Store at 4°C short term. Aliquot and store at -20°C long term. Avoid freeze/thaw cycles.
Stability:	1 year
Predicted Protein Size:	48kDa
Gene Name:	Jun proto-oncogene, AP-1 transcription factor subunit
Database Link:	Entrez Gene 3725 Human P05412
Background:	Swiss-Prot Acc.P05412.Transcription factor that recognizes and binds to the enhancer heptamer motif 5'-TGA[CG]TCA-3'. Promotes activity of NR5A1 when phosphorylated by HIPK3 leading to increased steroidogenic gene expression upon cAMP signaling pathway stimulation.
Synonyms:	AP-1; AP1; c-Jun; p39



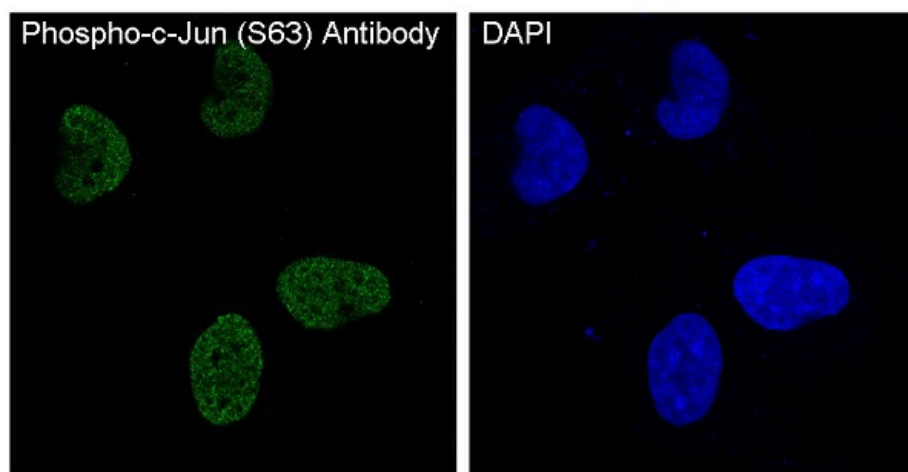
[View online »](#)

Product images:

Western blot analysis of c-Jun Phosphorylation in NIH/3T3 lysates treated with Anisomycin using Phospho-c-Jun (Ser63) antibody.



Immunohistochemistry analysis of paraffin-embedded Human breast carcinoma using Phospho-c-Jun (S63) antibody. High-pressure and temperature Sodium Citrate pH 6.0 was used for antigen retrieval.



Immunofluorescence analysis of Phospho-c-Jun (Ser63) in HeLa treated with anisomycin using Phospho-c-Jun (S63) antibody.