

## Product datasheet for **TA384580M**

### c-Jun (JUN) Rabbit Polyclonal Antibody

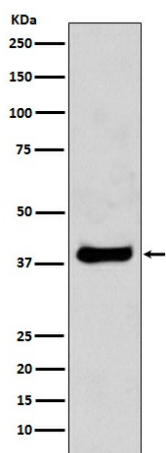
#### Product data:

Product Type:	Primary Antibodies
Applications:	IF, IHC, IP, WB
Recommended Dilution:	WB: 1/500-1/2000 IHC: 1/50-1/200 ICC/IF: 1/50-1/200 IP: 1/50
Reactivity:	Human, Mouse, Rat
Host:	Rabbit
Isotype:	IgG
Clonality:	Polyclonal
Immunogen:	A synthesized peptide derived from human c-Jun
Formulation:	Rabbit IgG in phosphate buffered saline , pH 7.4, 150mM NaCl, 0.02% sodium azide and 50% glycerol.
Concentration:	lot specific
Purification:	Affinity Chromatography
Conjugation:	Unconjugated
Storage:	Store at 4°C short term. Aliquot and store at -20°C long term. Avoid freeze/thaw cycles.
Stability:	1 year
Predicted Protein Size:	43kDa
Gene Name:	Jun proto-oncogene, AP-1 transcription factor subunit
Database Link:	<a href="#">Entrez Gene 3725 Human P05412</a>
Background:	Swiss-Prot Acc.P05412.c-jun is a transcription factor that recognizes and binds to the enhancer heptamer motif 5'-TGA[CG]TCA-3'. Promotes activity of NR5A1 when phosphorylated by HIPK3 leading to increased steroidogenic gene expression upon cAMP signaling pathway stimulation.
Synonyms:	AP-1; AP1; c-Jun; p39

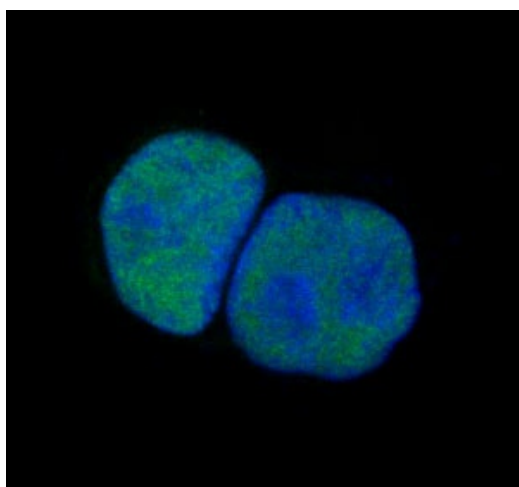


[View online »](#)

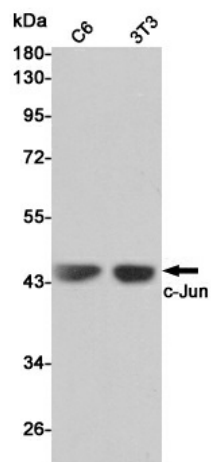
## Product images:



Western blot analysis of c-Jun expression in NIH/3T3 lysates using c-Jun antibody



Immunofluorescent analysis of HeLa cells, using c-Jun Antibody .



Western blot analysis of c-Jun expression in C6 and 3T3 cell lysates using c-Jun antibody at 1/1000 dilution. Predicted band size: 43KDa. Observed band size: 43KDa.