

## Product datasheet for **TA384579M**

### c-Jun (JUN) Rabbit Polyclonal Antibody

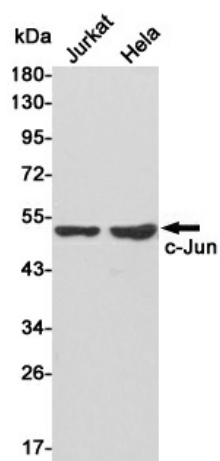
#### Product data:

Product Type:	Primary Antibodies
Applications:	ELISA, IF, IHC, IP, WB
Recommended Dilution:	IF: 1/50-200 WB: 1/500-1/2000 IHC: 1/100-1/300 Immunoprecipitation: 2-5 ELISA: 1/20000
Reactivity:	Human, Mouse, Rat
Host:	Rabbit
Isotype:	IgG
Clonality:	Polyclonal
Immunogen:	The antiserum was produced against synthesized peptide derived from human c-Jun. AA range:58-107
Formulation:	Liquid in PBS containing 50% glycerol, 0.5% BSA and 0.02% sodium azide, pH 7.3.
Concentration:	lot specific
Purification:	Affinity Purified
Conjugation:	Unconjugated
Storage:	Store at 4°C short term. Aliquot and store at -20°C long term. Avoid freeze/thaw cycles.
Stability:	1 year
Predicted Protein Size:	Observed MW (kDa):38
Gene Name:	Jun proto-oncogene, AP-1 transcription factor subunit
Database Link:	<a href="#">Entrez Gene 3725 Human P05412</a>
Background:	Swiss-Prot Acc.P05412.
Synonyms:	AP-1; AP1; c-Jun; p39

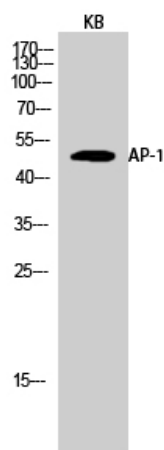


[View online »](#)

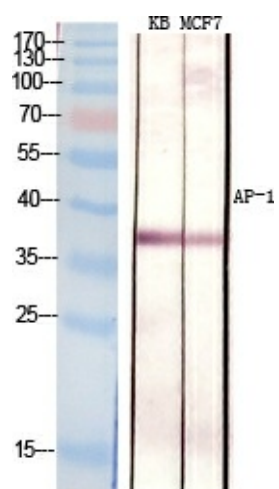
## Product images:



Western blot analysis of c-Jun in Jurkat and HeLa lysates using c-Jun antibody.



Western blot analysis of c-Jun in KB lysates using AP1 antibody.



Western blot analysis of c-Jun in KB MCF-7 lysates using AP1 antibody