

## Product datasheet for **TA384579**

### c-Jun (JUN) Rabbit Polyclonal Antibody

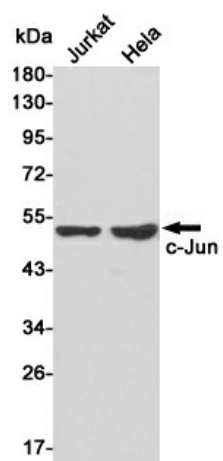
#### Product data:

|                         |  |
|-------------------------|--|
| Product Type:           | Primary Antibodies   |
| Applications:           | ELISA, IF, IHC, IP, WB   |
| Recommended Dilution:   | IF: 1/50-200<br>WB: 1/500-1/2000<br>IHC: 1/100-1/300<br>Immunoprecipitation: 2-5<br>ELISA: 1/20000 |
| Reactivity:             | Human, Mouse, Rat  |
| Host:                   | Rabbit   |
| Isotype:                | IgG  |
| Clonality:              | Polyclonal   |
| Immunogen:              | The antiserum was produced against synthesized peptide derived from human c-Jun. AA range:58-107   |
| Formulation:            | Liquid in PBS containing 50% glycerol, 0.5% BSA and 0.02% sodium azide, pH 7.3.                    |
| Concentration:          | lot specific   |
| Purification:           | Affinity Purified  |
| Conjugation:            | Unconjugated   |
| Storage:                | Store at 4°C short term. Aliquot and store at -20°C long term. Avoid freeze/thaw cycles.           |
| Stability:              | 1 year   |
| Predicted Protein Size: | Observed MW (kDa):38   |
| Gene Name:              | Jun proto-oncogene, AP-1 transcription factor subunit  |
| Database Link:          | <a href="#">Entrez Gene 3725 Human P05412</a>  |
| Background:             | Swiss-Prot Acc.P05412.   |
| Synonyms:               | AP-1; AP1; c-Jun; p39  |

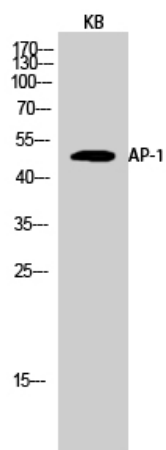


[View online »](#)

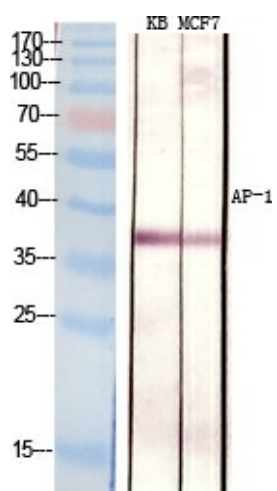
## Product images:



Western blot analysis of c-Jun in Jurkat and HeLa lysates using c-Jun antibody.



Western blot analysis of c-Jun in KB lysates using AP1 antibody.



Western blot analysis of c-Jun in KB MCF-7 lysates using AP1 antibody