

Product datasheet for **TA384576**

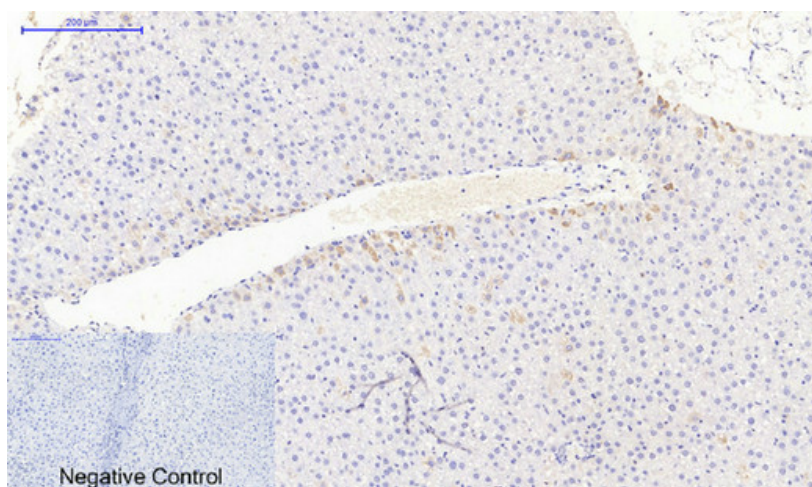
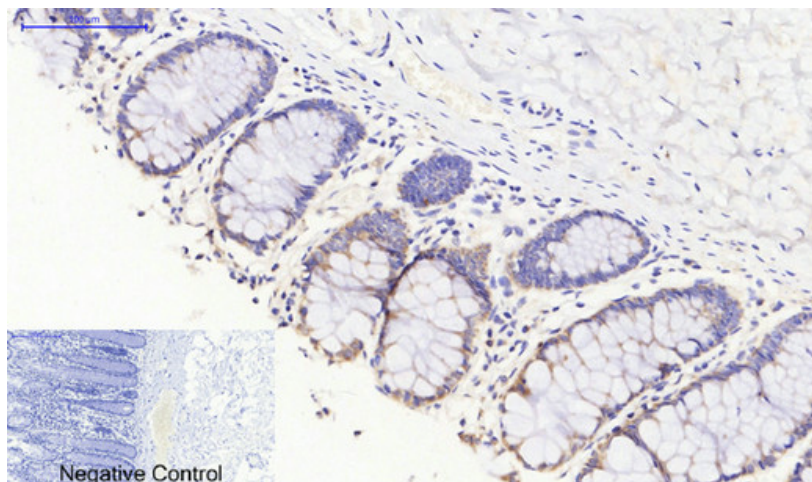
JAK3 Rabbit Polyclonal Antibody

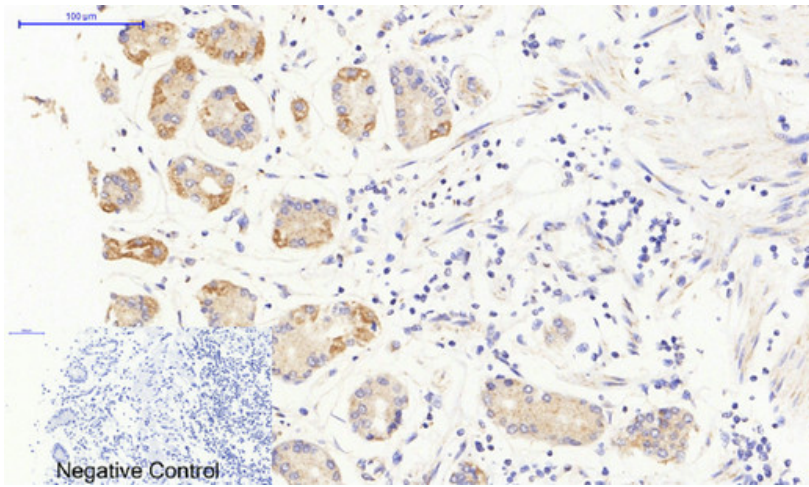
Product data:

Product Type:	Primary Antibodies
Applications:	ELISA, IF, IHC, WB
Recommended Dilution:	WB: 1/500-1/2000 IHC: 1/100-1/300 IF: 1/200-1/1000 ELISA: 1/20000
Reactivity:	Human, Mouse, Rat
Host:	Rabbit
Isotype:	IgG
Clonality:	Polyclonal
Immunogen:	The antiserum was produced against synthesized peptide derived from human JAK3. AA range:751-800
Formulation:	Liquid in PBS containing 50% glycerol, 0.5% BSA and 0.02% sodium azide, pH 7.3.
Concentration:	lot specific
Purification:	Affinity Purified
Conjugation:	Unconjugated
Storage:	Store at 4°C short term. Aliquot and store at -20°C long term. Avoid freeze/thaw cycles.
Stability:	1 year
Predicted Protein Size:	Observed MW (kDa):125
Database Link:	P52333
Background:	Swiss-Prot Acc.P52333.

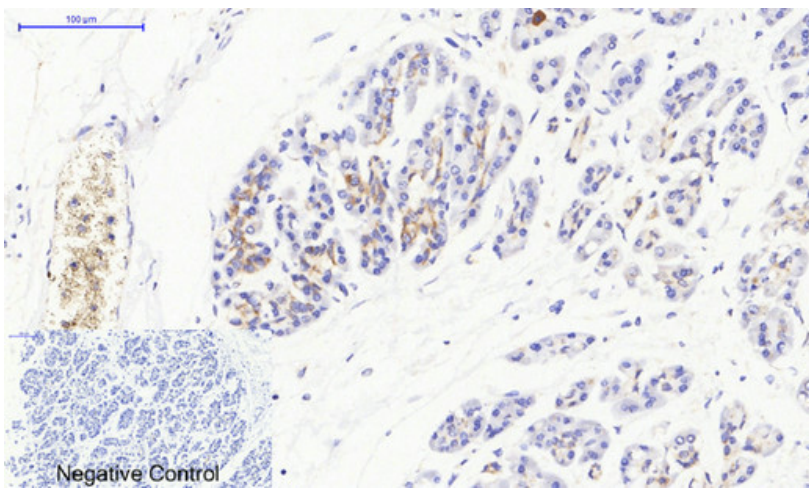


[View online »](#)

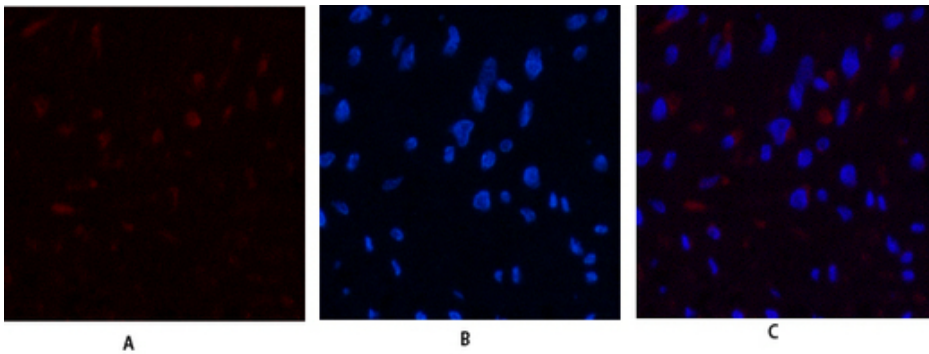
Product images:



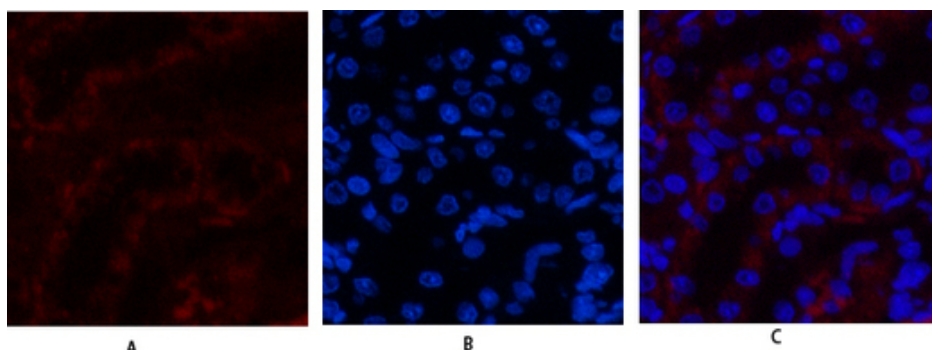
Immunohistochemistry analysis of paraffin-embedded Human stomach tissue using JAK3 antibody. High-pressure and temperature Sodium Citrate pH 6.0 was used for antigen retrieval. Negative control was used by secondary antibody only.



Immunohistochemistry analysis of paraffin-embedded Human stomach cancer tissue using JAK3 antibody. High-pressure and temperature Sodium Citrate pH 6.0 was used for antigen retrieval. Negative control was used by secondary antibody only.



Immunofluorescence analysis of JAK3 in Human uterus tissue using JAK3 antibody (red), and DAPI (blue).



Immunofluorescence analysis of JAK3 in rat kidney using JAK3 antibody(red),and DAPI (blue).