

Product datasheet for **TA384575**

JAK2 Rabbit Polyclonal Antibody

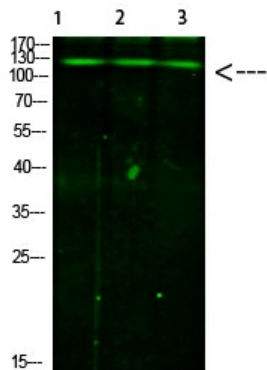
Product data:

Product Type:	Primary Antibodies
Applications:	ELISA, WB
Recommended Dilution:	WB: 1/500-1/2000 ELISA: 1/20000
Reactivity:	Human, Mouse, Rat
Host:	Rabbit
Isotype:	IgG
Clonality:	Polyclonal
Immunogen:	Synthesized Phospho peptide derived from human JAK2/3.at AA range: T966 (Phosphorylated)
Formulation:	Liquid in PBS containing 50% glycerol, 0.5% BSA and 0.02% sodium azide, pH 7.3.
Concentration:	lot specific
Purification:	Affinity Purified
Conjugation:	Unconjugated
Storage:	Store at 4°C short term. Aliquot and store at -20°C long term. Avoid freeze/thaw cycles.
Stability:	1 year
Predicted Protein Size:	Observed MW (kDa): 130
Gene Name:	Janus kinase 2
Database Link:	Entrez Gene 3717 Human O60674
Background:	Swiss-Prot Acc.O60674/P52333.
Synonyms:	JAK-2; JTK10

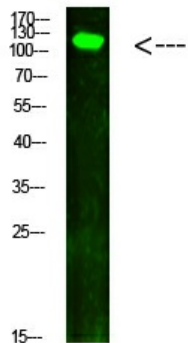


[View online »](#)

Product images:



Western blot analysis of Phospho-JAK2/3 (Tyr966/939) in mouse liver, hela , mouse brain lysates using Phospho-JAK2/3 (Tyr966/939) antibody.



Western blot analysis of Phospho-JAK2/3 (Tyr966/939) in hela lysates using Phospho-JAK2/3 (Tyr966/939) antibody.