

## Product datasheet for **TA384567**

### ITGB7 Rabbit Polyclonal Antibody

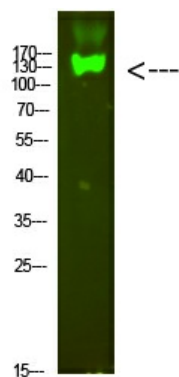
#### Product data:

Product Type:	Primary Antibodies
Applications:	ELISA, WB
Recommended Dilution:	WB: 1/500-2000
Reactivity:	Human, Mouse
Host:	Rabbit
Isotype:	IgG
Clonality:	Polyclonal
Immunogen:	Synthesized peptide derived from human Integrin $\beta$ 7. at AA range: 671-720
Formulation:	Liquid in PBS containing 50% glycerol, 0.5% BSA and 0.02% sodium azide, pH 7.3.
Concentration:	lot specific
Purification:	Affinity Purified
Conjugation:	Unconjugated
Storage:	Store at 4°C short term. Aliquot and store at -20°C long term. Avoid freeze/thaw cycles.
Stability:	1 year
Predicted Protein Size:	Observed MW (kDa):130
Database Link:	<a href="#">P26010</a>
Background:	Swiss-Prot Acc.P26010.



[View online »](#)

## Product images:



Western blot analysis of Integrin beta 7 in mouse heart lysates using Integrin beta 7 antibody.