

## Product datasheet for **TA384566**

### ITGB6 Rabbit Monoclonal Antibody [Clone ID: R04-6E9]

#### Product data:

Product Type:	Primary Antibodies
Clone Name:	R04-6E9
Applications:	IP, WB
Recommended Dilution:	WB: 1/2000-1/10000 IP: 1/20
Reactivity:	Human, Mouse, Rat
Host:	Rabbit
Isotype:	IgG
Clonality:	Monoclonal
Immunogen:	A synthetic peptide of human ITGB6
Formulation:	50mM Tris-Glycine(pH 7.4), 0.15M NaCl, 40% Glycerol, 0.01% Sodium azide and 0.05% BSA
Concentration:	lot specific
Purification:	Affinity Purified
Conjugation:	Unconjugated
Storage:	Store at 4°C short term. Aliquot and store at -20°C long term. Avoid freeze/thaw cycles.
Stability:	1 year
Predicted Protein Size:	Calculated MW: 86 kDa; Observed MW: 86 kDa
Gene Name:	integrin subunit beta 6
Database Link:	<a href="#">Entrez Gene 3694 Human P18564</a>



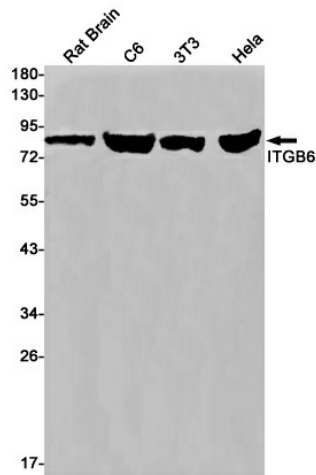
[View online »](#)

**Background:**

Swiss-Prot Acc.P18564.Integrin alpha-V:beta-6 (ITGAV:ITGB6) is a receptor for fibronectin and cytotactin (PubMed:17545607, PubMed:17158881). It recognizes the sequence R-G-D in its ligands (PubMed:17545607, PubMed:17158881). Internalisation of integrin alpha-V/beta-6 via clathrin-mediated endocytosis promotes carcinoma cell invasion (PubMed:17545607, PubMed:17158881). ITGAV:ITGB6 acts as a receptor for fibrillin-1 (FBN1) and mediates R-G-D-dependent cell adhesion to FBN1 (PubMed:17158881). Integrin alpha-V:beta-6 (ITGAV:ITGB6) mediates R-G-D-dependent release of transforming growth factor beta-1 (TGF-beta-1) from regulatory Latency-associated peptide (LAP), thereby playing a key role in TGF-beta-1 activation (PubMed:15184403, PubMed:22278742, PubMed:28117447).

**Synonyms:**

OTTHUMP00000205128

**Product images:**

Western blot analysis of ITGB6 in rat Brain, C6, 3T3, HeLa lysates using Integrin beta 6 antibody.