

Product datasheet for **TA384565**

Itgb4 Rabbit Polyclonal Antibody

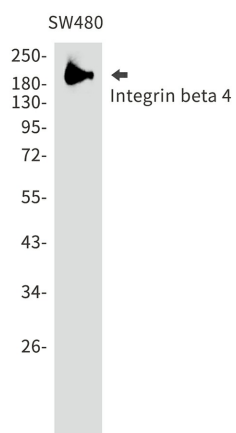
Product data:

Product Type:	Primary Antibodies
Applications:	IHC, WB
Recommended Dilution:	WB: 1/1000 IHC: 1/50
Reactivity:	Human
Host:	Rabbit
Isotype:	IgG
Clonality:	Polyclonal
Immunogen:	Recombinant protein of mouse Integrin beta 4
Formulation:	50mM Tris-Glycine(pH 7.4), 0.15M NaCl, 40% Glycerol, 0.01% Sodium azide and 0.05% BSA
Concentration:	lot specific
Purification:	Affinity Purified
Conjugation:	Unconjugated
Storage:	Store at 4°C short term. Aliquot and store at -20°C long term. Avoid freeze/thaw cycles.
Stability:	1 year
Predicted Protein Size:	Calculated MW: 202 kDa; Observed MW: 202 kDa
Gene Name:	integrin beta 4
Database Link:	A2A863
Synonyms:	CD104; GP150



[View online »](#)

Product images:



Western blot analysis of Integrin beta 4 in SW480 lysates using Integrin beta 4 antibody.