

## Product datasheet for **TA384561M**

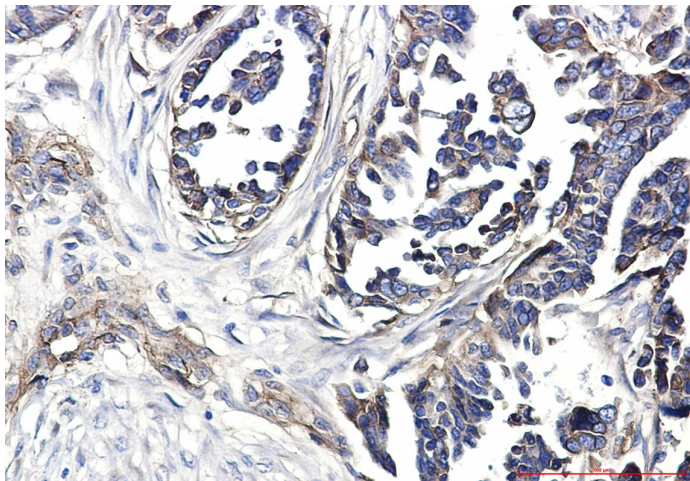
### Integrin beta 1 (ITGB1) Rabbit Polyclonal Antibody

#### Product data:

Product Type:	Primary Antibodies
Applications:	FC, IHC, WB
Recommended Dilution:	WB: 1/1000 IHC: 1/50 FC: 1/50
Reactivity:	Human
Host:	Rabbit
Isotype:	IgG
Clonality:	Polyclonal
Immunogen:	A synthetic peptide of human Integrin beta 1
Formulation:	50mM Tris-Glycine(pH 7.4), 0.15M NaCl, 40% Glycerol, 0.01% Sodium azide and 0.05% BSA
Concentration:	lot specific
Purification:	Affinity Purified
Conjugation:	Unconjugated
Storage:	Store at 4°C short term. Aliquot and store at -20°C long term. Avoid freeze/thaw cycles.
Stability:	1 year
Predicted Protein Size:	Calculated MW: 88 kDa; Observed MW: 120-160 kDa
Gene Name:	integrin subunit beta 1
Database Link:	<a href="#">Entrez Gene 3688 Human P05556</a>
Background:	Swiss-Prot Acc.P05556.
Synonyms:	CD29; FNRB; GPIIA; MDF2; MSK12; VLA-BETA; VLAB



[View online »](#)

**Product images:**

Immunohistochemistry analysis of paraffin-embedded Human Cholangiocarcinoma using Integrin beta 1 antibody. High-pressure and temperature Sodium Citrate pH 6.0 was used for antigen retrieval.