

## Product datasheet for **TA384558S**

### Itgam Rabbit Monoclonal Antibody [Clone ID: R01-3F9]

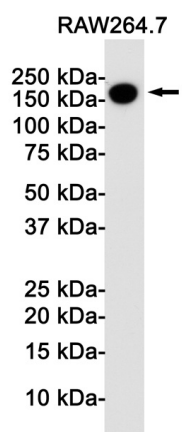
#### Product data:

|                         |  |
|-------------------------|--|
| Product Type:           | Primary Antibodies   |
| Clone Name:             | R01-3F9  |
| Applications:           | IP, WB   |
| Recommended Dilution:   | WB: 1/1000<br>IP: 1/20   |
| Reactivity:             | Mouse  |
| Host:                   | Rabbit   |
| Isotype:                | IgG  |
| Clonality:              | Monoclonal   |
| Immunogen:              | A synthetic peptide of mouse CD11b   |
| Formulation:            | 50mM Tris-Glycine(pH 7.4), 0.15M NaCl, 40% Glycerol, 0.01% Sodium azide and 0.05% BSA    |
| Concentration:          | lot specific   |
| Purification:           | Affinity Purified  |
| Conjugation:            | Unconjugated   |
| Storage:                | Store at 4°C short term. Aliquot and store at -20°C long term. Avoid freeze/thaw cycles. |
| Stability:              | 1 year   |
| Predicted Protein Size: | Calculated MW: 128 kDa; Observed MW: 170 kDa   |
| Gene Name:              | integrin alpha M   |
| Database Link:          | <a href="#">Entrez Gene 16409 Mouse P05555</a>   |
| Background:             | Swiss-Prot Acc.P05555.   |
| Synonyms:               | CD11B; CR3A; MAC-1; MAC1A; MGC117044; MO1A; SLEB6  |



[View online »](#)

Product images:



Western blot analysis of CD11b in Raw264.7 lysates using CD11b antibody.