

## Product datasheet for **TA384558**

### Itgam Rabbit Monoclonal Antibody [Clone ID: R01-3F9]

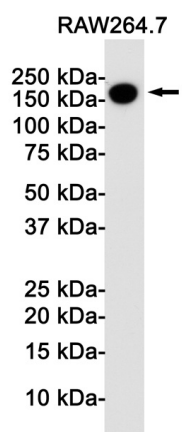
#### Product data:

Product Type:	Primary Antibodies
Clone Name:	R01-3F9
Applications:	IP, WB
Recommended Dilution:	WB: 1/1000 IP: 1/20
Reactivity:	Mouse
Host:	Rabbit
Isotype:	IgG
Clonality:	Monoclonal
Immunogen:	A synthetic peptide of mouse CD11b
Formulation:	50mM Tris-Glycine(pH 7.4), 0.15M NaCl, 40% Glycerol, 0.01% Sodium azide and 0.05% BSA
Concentration:	lot specific
Purification:	Affinity Purified
Conjugation:	Unconjugated
Storage:	Store at 4°C short term. Aliquot and store at -20°C long term. Avoid freeze/thaw cycles.
Stability:	1 year
Predicted Protein Size:	Calculated MW: 128 kDa; Observed MW: 170 kDa
Gene Name:	integrin alpha M
Database Link:	<a href="#">Entrez Gene 16409 Mouse P05555</a>
Background:	Swiss-Prot Acc.P05555.
Synonyms:	CD11B; CR3A; MAC-1; MAC1A; MGC117044; MO1A; SLEB6



[View online »](#)

## Product images:



Western blot analysis of CD11b in Raw264.7 lysates using CD11b antibody.