

Product datasheet for **TA384555**

Integrin alpha 4 (ITGA4) Rabbit Polyclonal Antibody

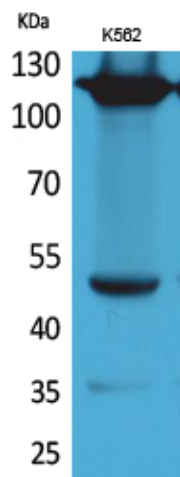
Product data:

Product Type:	Primary Antibodies
Applications:	ELISA, IHC, WB
Recommended Dilution:	WB: 1/500-1/2000 IHC-p: 1/100-300 ELISA: 1/20000
Reactivity:	Human, Mouse, Rat
Host:	Rabbit
Isotype:	IgG
Clonality:	Polyclonal
Immunogen:	The antiserum was produced against synthesized peptide derived from the Internal region of human ITGA4. AA range:571-620
Formulation:	Liquid in PBS containing 50% glycerol, 0.5% BSA and 0.02% sodium azide, pH 7.3.
Concentration:	lot specific
Purification:	Affinity Purified
Conjugation:	Unconjugated
Storage:	Store at 4°C short term. Aliquot and store at -20°C long term. Avoid freeze/thaw cycles.
Stability:	1 year
Predicted Protein Size:	Observed MW (kDa):120
Gene Name:	integrin subunit alpha 4
Database Link:	Entrez Gene 3676 Human P13612
Background:	Swiss-Prot Acc.P13612.
Synonyms:	CD49D; IA4; MGC90518; VLA-4

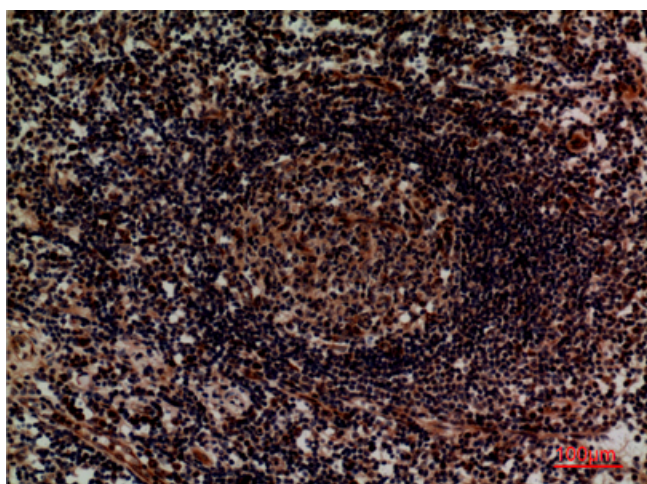


[View online »](#)

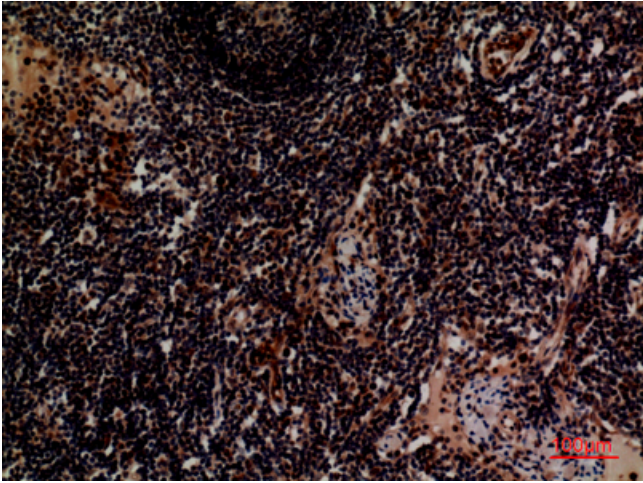
Product images:



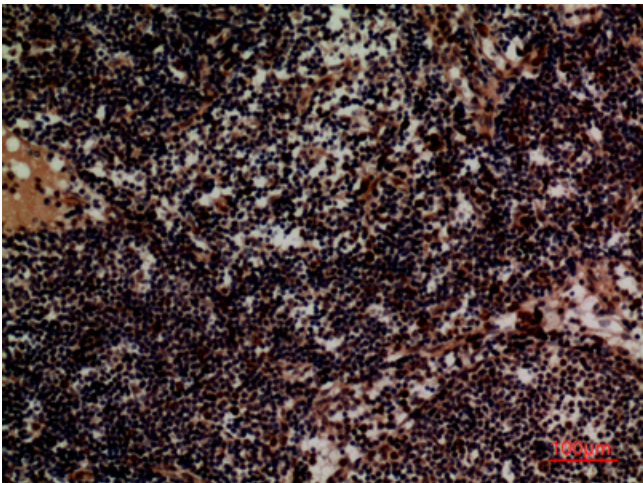
Western blot analysis of Integrin alpha 4 in K562 lysates using Integrin alpha 4 antibody.



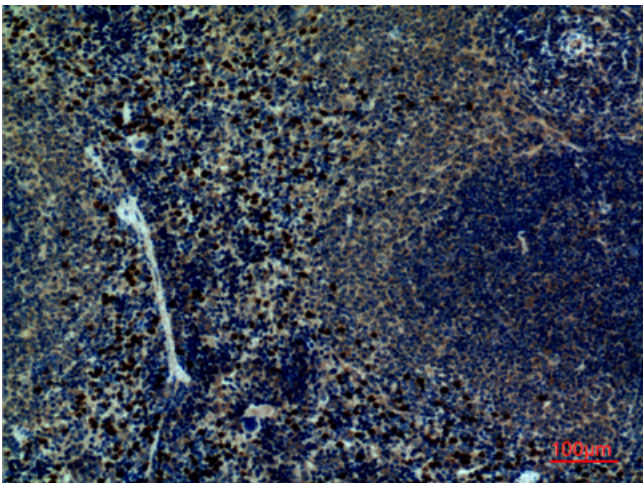
Immunohistochemistry analysis of paraffin-embedded Human lymph using Integrin alpha 4 antibody. High-pressure and temperature Sodium Citrate pH 6.0 was used for antigen retrieval.



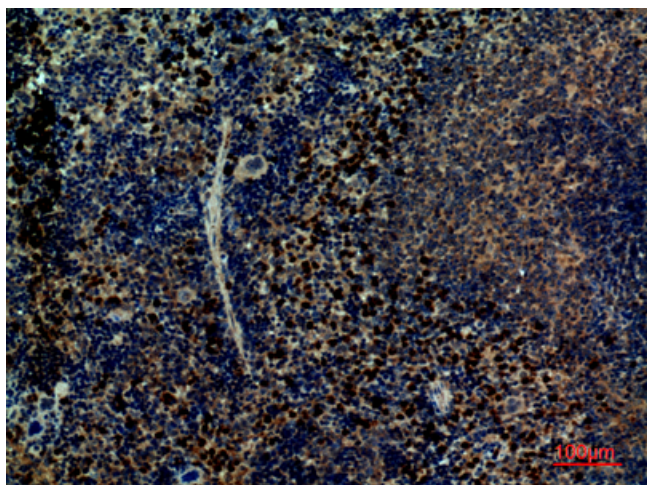
Immunohistochemistry analysis of paraffin-embedded Human lymph using Integrin alpha 4 antibody. High-pressure and temperature Sodium Citrate pH 6.0 was used for antigen retrieval.



Immunohistochemistry analysis of paraffin-embedded Human lymph using Integrin alpha 4 antibody. High-pressure and temperature Sodium Citrate pH 6.0 was used for antigen retrieval.



Immunohistochemistry analysis of paraffin-embedded mouse spleen using Integrin alpha 4 antibody. High-pressure and temperature Sodium Citrate pH 6.0 was used for antigen retrieval.



Immunohistochemistry analysis of paraffin-embedded mouse spleen using Integrin alpha 4 antibody. High-pressure and temperature Sodium Citrate pH 6.0 was used for antigen retrieval.