

## Product datasheet for **TA384553**

### CD41 (ITGA2B) Rabbit Polyclonal Antibody

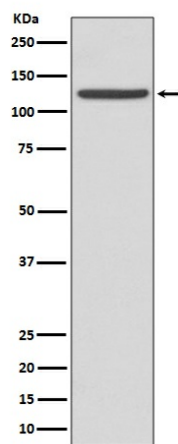
#### Product data:

Product Type:	Primary Antibodies
Applications:	IHC, WB
Recommended Dilution:	WB: 1/500-1/1000 IHC: 1/50-1/200
Reactivity:	Human
Host:	Rabbit
Isotype:	IgG
Clonality:	Polyclonal
Immunogen:	A synthesized peptide derived from human CD41
Formulation:	Rabbit IgG in phosphate buffered saline , pH 7.4, 150mM NaCl, 0.02% sodium azide and 50% glycerol.
Concentration:	lot specific
Purification:	Affinity Chromatography
Conjugation:	Unconjugated
Storage:	Store at 4°C short term. Aliquot and store at -20°C long term. Avoid freeze/thaw cycles.
Stability:	1 year
Predicted Protein Size:	135kDa
Gene Name:	integrin subunit alpha 2b
Database Link:	<a href="#">Entrez Gene 3674 Human P08514</a>
Background:	Swiss-Prot Acc.P08514.Integrin alpha-IIb/beta-3 is a receptor for fibronectin, fibrinogen, plasminogen, prothrombin, thrombospondin and vitronectin. It recognizes the sequence R-G-D in a wide array of ligands. It recognizes the sequence H-H-L-G-G-G-A-K-Q-A-G-D-V in fibrinogen gamma chain.
Synonyms:	CD41; CD41B; GP2B; GPIIb; GTA; HPA3; ITGAB



[View online »](#)

## Product images:



Western blot analysis of CD41 in Human fetal liver lysates using Integrin alpha IIb antibody.