

## Product datasheet for **TA384551S**

### Islet 1 (ISL1) Rabbit Polyclonal Antibody

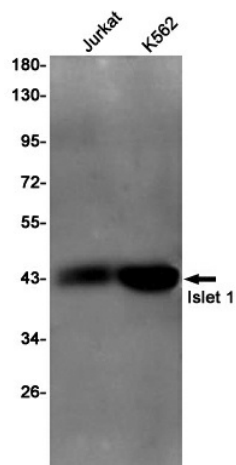
#### Product data:

Product Type:	Primary Antibodies
Applications:	FC, IF, IP, WB
Recommended Dilution:	WB: 1/2000 ICC/IF: 1/20 FC: 1/20 IP: 1/20
Reactivity:	Human
Host:	Rabbit
Isotype:	IgG
Clonality:	Polyclonal
Immunogen:	A synthetic peptide of human Islet 1
Formulation:	50mM Tris-Glycine(pH 7.4), 0.15M NaCl, 40% Glycerol, 0.01% Sodium azide and 0.05% BSA
Concentration:	lot specific
Purification:	Affinity Purified
Conjugation:	Unconjugated
Storage:	Store at 4°C short term. Aliquot and store at -20°C long term. Avoid freeze/thaw cycles.
Stability:	1 year
Predicted Protein Size:	Calculated MW: 39 kDa; Observed MW: 39 kDa
Gene Name:	ISL LIM homeobox 1
Database Link:	<a href="#">Entrez Gene 3670 Human P61371</a>
Background:	Swiss-Prot Acc.P61371.
Synonyms:	Isl-1; islet-1; ISLET1

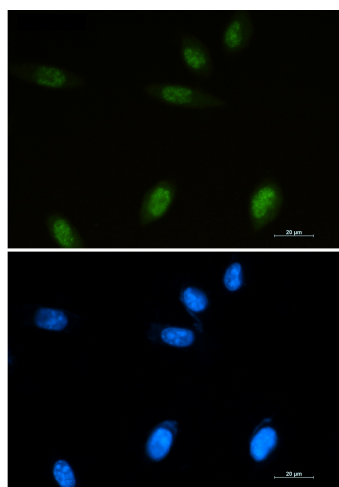


[View online »](#)

## Product images:



Western blot analysis of Islet 1 in Jurkat, K562 lysates using Islet 1 antibody.



Immunocytochemistry analysis of Islet 1 (green) in SH-SY5Y using Islet 1 antibody, and DAPI (blue).