

## Product datasheet for **TA384545**

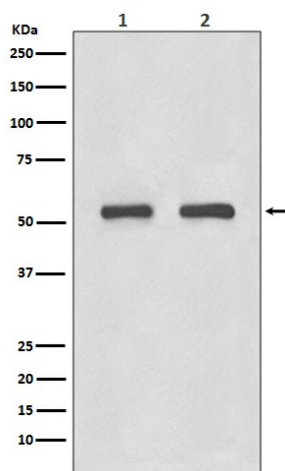
### IRF3 Rabbit Polyclonal Antibody

#### Product data:

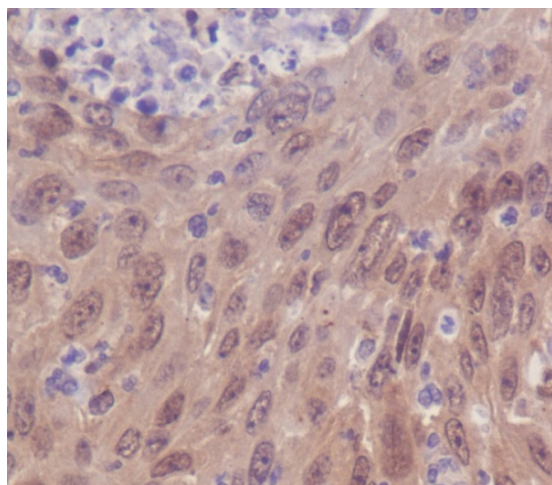
Product Type:	Primary Antibodies
Applications:	FC, IF, IHC, WB
Recommended Dilution:	WB: 1/500-1/1000 IHC: 1/50-1/200 ICC/IF: 1/50-1/200 FC: 1/100
Reactivity:	Human, Mouse, Rat
Host:	Rabbit
Isotype:	IgG
Clonality:	Polyclonal
Immunogen:	A synthesized peptide derived from human IRF3
Formulation:	Rabbit IgG in phosphate buffered saline , pH 7.4, 150mM NaCl, 0.02% sodium azide and 50% glycerol.
Concentration:	lot specific
Purification:	Affinity Chromatography
Conjugation:	Unconjugated
Storage:	Store at 4°C short term. Aliquot and store at -20°C long term. Avoid freeze/thaw cycles.
Stability:	1 year
Predicted Protein Size:	57kDa
Gene Name:	interferon regulatory factor 3
Database Link:	<a href="#">Entrez Gene 3661 Human Q14653</a>
Background:	Swiss-Prot Acc.Q14653.IRFs comprise a family of transcription factors that function within the Jak/Stat pathway to regulate interferon (IFN) and IFN-inducible gene expression in response to viral infection. IRF-3 can inhibit cell growth and plays a critical role in controlling the expression of genes in the innate immune response.
Synonyms:	IRF-3



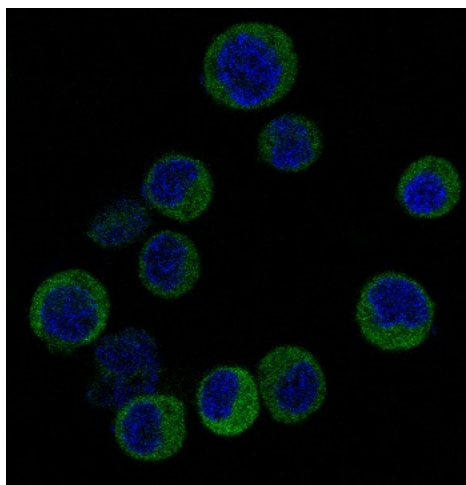
[View online »](#)

**Product images:**

Western blot analysis of IRF3 in (1) HeLa lysates; (2) 3T3 lysates using IRF3 antibody.



Immunohistochemistry analysis of paraffin-embedded Human cervix carcinoma using IRF3 antibody. High-pressure and temperature Sodium Citrate pH 6.0 was used for antigen retrieval.



Immunofluorescence analysis of IRF3 in Jurkat using IRF3 antibody.