

## Product datasheet for **TA384543**

### IRF1 Rabbit Polyclonal Antibody

#### Product data:

Product Type:	Primary Antibodies
Applications:	FC, IF, IHC, IP, WB
Recommended Dilution:	WB: 1/500-1/1000 IHC: 1/50-1/100 ICC/IF: 1/50-1/100 IP: 1/50 FC: 1/50
Reactivity:	Human, Mouse, Rat
Host:	Rabbit
Isotype:	IgG
Clonality:	Polyclonal
Immunogen:	A synthesized peptide derived from human IRF1
Formulation:	Rabbit IgG in phosphate buffered saline , pH 7.4, 150mM NaCl, 0.02% sodium azide and 50% glycerol.
Concentration:	lot specific
Purification:	Affinity Chromatography
Conjugation:	Unconjugated
Storage:	Store at 4°C short term. Aliquot and store at -20°C long term. Avoid freeze/thaw cycles.
Stability:	1 year
Predicted Protein Size:	48kDa
Gene Name:	interferon regulatory factor 1
Database Link:	<a href="#">Entrez Gene 3659 Human P10914</a>

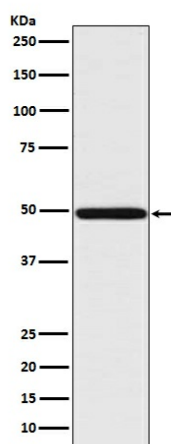


[View online »](#)

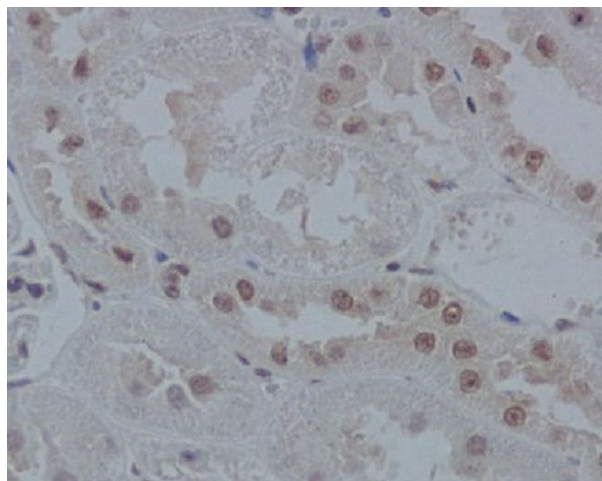
**Background:** Swiss-Prot Acc.P10914. Specifically binds to the upstream regulatory region of type I IFN and IFN-inducible MHC class I genes (the interferon consensus sequence (ICS)) and activates those genes. Acts as a tumor suppressor. Defects in IRF1 are a cause of gastric cancer (GASC) [MIM:613659]; also called gastric cancer inTinal or stomach cancer. Gastric cancer is a malignant disease which starts in the stomach, can spread to the esophagus or the small inTine, and can extend through the stomach wall to nearby lymph nodes and organs. It also can metastasize to other parts of the body.

**Synonyms:** IRF-1; MAR; OTTHUMP00000198266

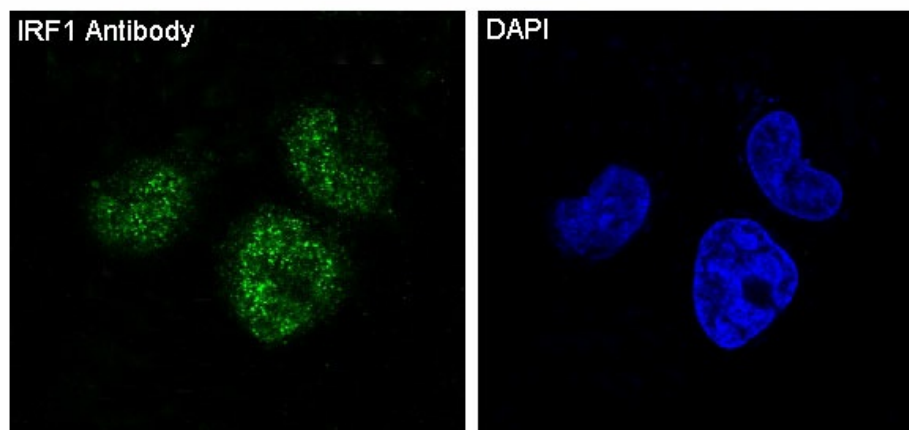
**Product images:**



Western blot analysis of IRF1 in Jurkat lysates using IRF1 antibody.



Immunohistochemistry analysis of paraffin-embedded rat kidney using IRF1 antibody. High-pressure and temperature Sodium Citrate pH 6.0 was used for antigen retrieval.



Immunofluorescence analysis of IRF1 in HeLa using IRF1 antibody.