

Product datasheet for **TA384541S**

Importin 9 (IPO9) Rabbit Monoclonal Antibody [Clone ID: R03-8D9]

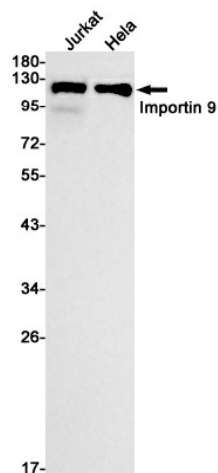
Product data:

Product Type:	Primary Antibodies
Clone Name:	R03-8D9
Applications:	IF, IP, WB
Recommended Dilution:	WB: 1/1000 ICC/IF: 1/50 IP: 1/20
Reactivity:	Human
Host:	Rabbit
Isotype:	IgG
Clonality:	Monoclonal
Immunogen:	A synthetic peptide of human Importin 9
Formulation:	50mM Tris-Glycine(pH 7.4), 0.15M NaCl, 40% Glycerol, 0.01% Sodium azide and 0.05% BSA
Concentration:	lot specific
Purification:	Affinity Purified
Conjugation:	Unconjugated
Storage:	Store at 4°C short term. Aliquot and store at -20°C long term. Avoid freeze/thaw cycles.
Stability:	1 year
Predicted Protein Size:	Calculated MW: 115 kDa; Observed MW: 115 kDa
Gene Name:	importin 9
Database Link:	Entrez Gene 55705 Human Q96P70
Background:	Swiss-Prot Acc.Q96P70.
Synonyms:	DKFZp761M1547; FLJ10402; IMP9; KIAA1192; RANBP9

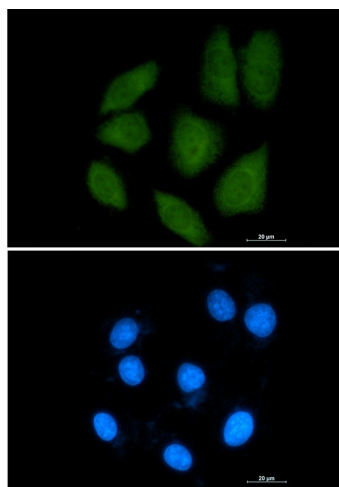


[View online »](#)

Product images:



Western blot analysis of Importin 9/RANBP9 in Jurkat, HeLa lysates using Importin 9/RANBP9 antibody.



Immunocytochemistry analysis of Importin 9 (green) in A549 using Importin 9 antibody, and DAPI(blue).