

Product datasheet for **TA384541M**

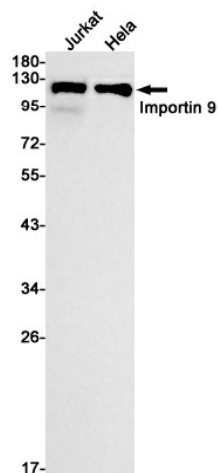
Importin 9 (IPO9) Rabbit Monoclonal Antibody [Clone ID: R03-8D9]

Product data:

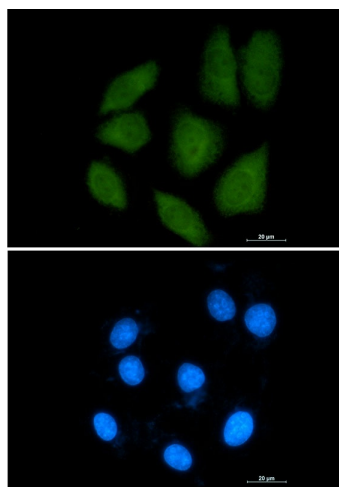
| | |
|-------------------------|--|
| Product Type: | Primary Antibodies |
| Clone Name: | R03-8D9 |
| Applications: | IF, IP, WB |
| Recommended Dilution: | WB: 1/1000 ICC/IF: 1/50 IP: 1/20 |
| Reactivity: | Human |
| Host: | Rabbit |
| Isotype: | IgG |
| Clonality: | Monoclonal |
| Immunogen: | A synthetic peptide of human Importin 9 |
| Formulation: | 50mM Tris-Glycine(pH 7.4), 0.15M NaCl, 40% Glycerol, 0.01% Sodium azide and 0.05% BSA |
| Concentration: | lot specific |
| Purification: | Affinity Purified |
| Conjugation: | Unconjugated |
| Storage: | Store at 4°C short term. Aliquot and store at -20°C long term. Avoid freeze/thaw cycles. |
| Stability: | 1 year |
| Predicted Protein Size: | Calculated MW: 115 kDa; Observed MW: 115 kDa |
| Gene Name: | importin 9 |
| Database Link: | Entrez Gene 55705 Human Q96P70 |
| Background: | Swiss-Prot Acc.Q96P70. |
| Synonyms: | DKFZp761M1547; FLJ10402; IMP9; KIAA1192; RANBP9 |

[View online »](#)

Product images:



Western blot analysis of Importin 9/RANBP9 in Jurkat, HeLa lysates using Importin 9/RANBP9 antibody.



Immunocytochemistry analysis of Importin 9 (green) in A549 using Importin 9 antibody, and DAPI(blue).